

SG1



~~SECRET~~/NOFORN - SKEET CHANNELS ONLY

PROJECT SUN STREAK (U)

WARNING NOTICE: INTELLIGENCE SOURCES AND METHODS INVOLVED

Session Procedures Report (S/NF/SK)

PROJECT NUMBER: 8713	SESSION NUMBER: 1
DATE OF SESSION: 6 OCT 87	TARGET COUNTRY:
REFERENCE:	MISSION STATUS:
TECHNIQUE UTILIZED: CRV	SOURCE IDENTIFIER: 011

1. (S/NF/SK) Monitor Tasking: Refer to tasking packet; no amplifying instructions received.
2. (S/NF/SK) Source Tasking: The Source was cued with the tasker-supplied coordinates.
3. (S/NF/SK) Summary: The Source's summary and sketches attached. Note that the association of the outlined activity with the target site was not explored in the session.
4. (S/NF/SK) Comments: The monitor has the "warm fuzzies" about the session results; the confidence factor is high.

SGFOIA3



*Repro  
Paper clipped  
pages.*

*Handwritten notes in the bottom left corner, including "all should be with confidence" and "one session".*

~~SECRET~~/NOFORN - SKEET CHANNELS ONLY

CLASSIFIED BY: DIA-DT  
DECLASSIFY : OADR

This document is made available through the declassification efforts  
and research of John Greenewald, Jr., creator of:

# The Black Vault



The Black Vault is the largest online Freedom of Information Act (FOIA) document clearinghouse in the world. The research efforts here are responsible for the declassification of hundreds of thousands of pages released by the U.S. Government & Military.

**Discover the Truth** at: <http://www.theblackvault.com>

## SESSION SUMMARY

SESSION: 6 OCT 87, 1022-1139HRS

THERE TWO MAJOR GESTALTS AT THIS SITE, CONSISTING OF LAND/  
STRUCTURE INTERFACE. THE LAND APPEARS TO BE SLOPING UPWARD WITH  
GENTLE, CURVING HILLS. THE LAND FEELS SOFT, SANDY, GRITTY, AND  
COLORS ASSOCIATED WITH IT ARE BROWNS, TANS, BLUE AND GREEN. THERE  
IS A FEELING OF AIRINESS HERE.

*like  
ocean  
see 003  
see 019*

THERE IS ALSO AN OBJECT ASSOCIATED WITH THIS SITE. THE OBJECT  
*(see sketches pages 7 and 9)*  
IS CONICAL IN SHAPE AND HAS A LARGE, FLAT BASE. THERE IS MOTION  
ASSOCIATED WITH THIS OBJECT. THE MOTION IS UPWARD, TIPPING, AND  
*(see sketch, page 7)*  
THEN DOWNWARD. SOMETHING ABOUT THE OBJECTS DESIGN

STABILIZES ITS MOTION. AT THE APEX OF THIS OBJECT IS A SOLID,  
DENSE  
BLACK, HEAVY MASS *(see sketch, page 9)*. CONTAINED INSIDE OF THIS

CONICAL OBJECT IS LONG CYLINDER WITH A BALL OR SPHERE <sup>*sketches  
(see pages 8 and 9)*</sup>

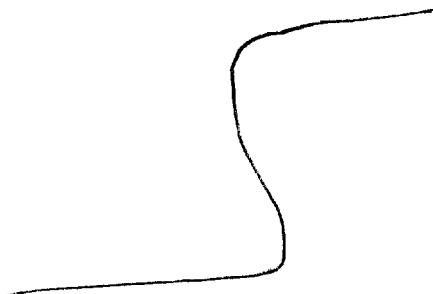
THAT IS SPINNING VERY FAST. THIS CYLINDER IS SUSPENDED  
IN SUCH A WAY AS TO BE ORIENTED UP AND DOWN AT ALL TIMES.

THE SPINNING BALLS' FUNCTION IS TO REMAIN CONSTANT.

*Viewer 011  
6 Oct '87*

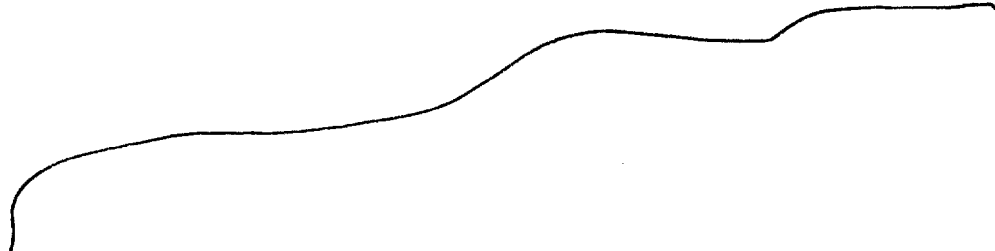
6 OCT 87  
1022 HRS

14752  
1218



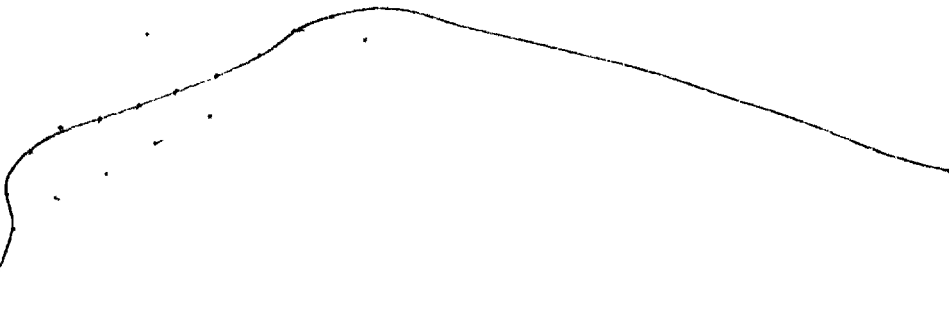
h. across page  
up. angle across  
west  
B structure

14752  
1213



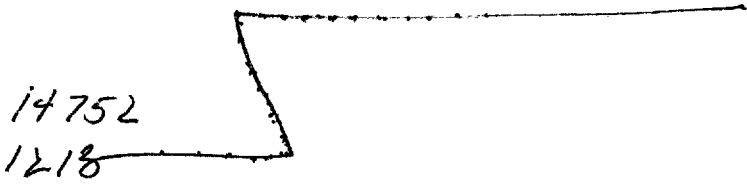
f incline up, curving  
over, incline up, curving  
incline up -  
soft  
B land

14752  
121%



A. curving up, curving  
 over, inclines up-  
 curving over & down  
 to bands.

S-2?  
 brown  
 tan  
 sandy  
 gritty  
 blue  
 green  
 grays  
 airy  
 soft



A across, angle up,  
angle across, flat  
hard

B. Structure

S-2?  
dark  
tall  
hard  
smooth  
vertical  
right angles  
sharp  
pointed



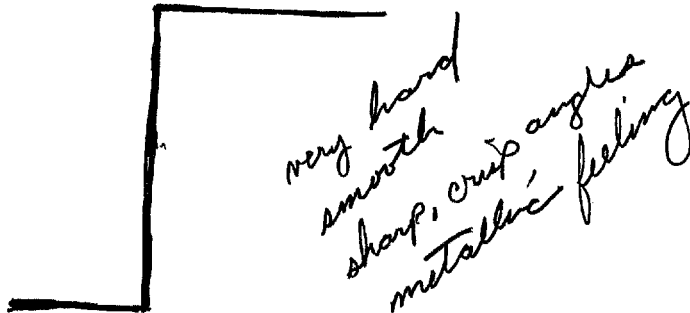
k. across, angle up,  
angle across, flat  
hard  
b. structure

s-2?  
angular  
hard  
smooth  
flat  
right angles  
dark  
sharp

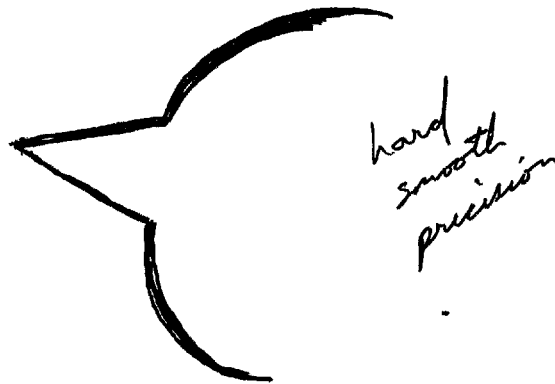


SOZ SKETCHES

AOL break  
object



A curving up  
with movement



impression of dealing with object or objects.

terrain gestalt - sloping upward - soft, sandy, gritty,  
brown, tan, blue, green, airy feeling, contour in  
sloping, gentle curving hills.

vertical  
angle  
pointed  
flat

AOZ break  
ledge

vertical  
upward

motion

high velocity

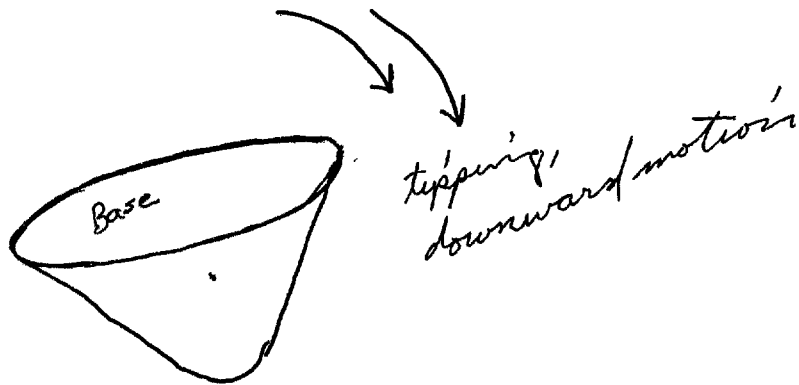
curving  
tipping  
downward

AI break

feeling of vertigo  
tipping, feel off-balance

OBJECT

flat  
pointed  
conical

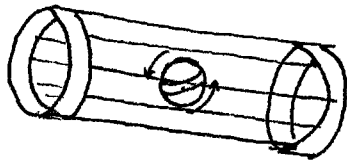


sol break  
like a re-entry  
vehicle

4<sup>1/2</sup> - something about this object's design that stabilizes its motion.

free-fall

INSIDE?

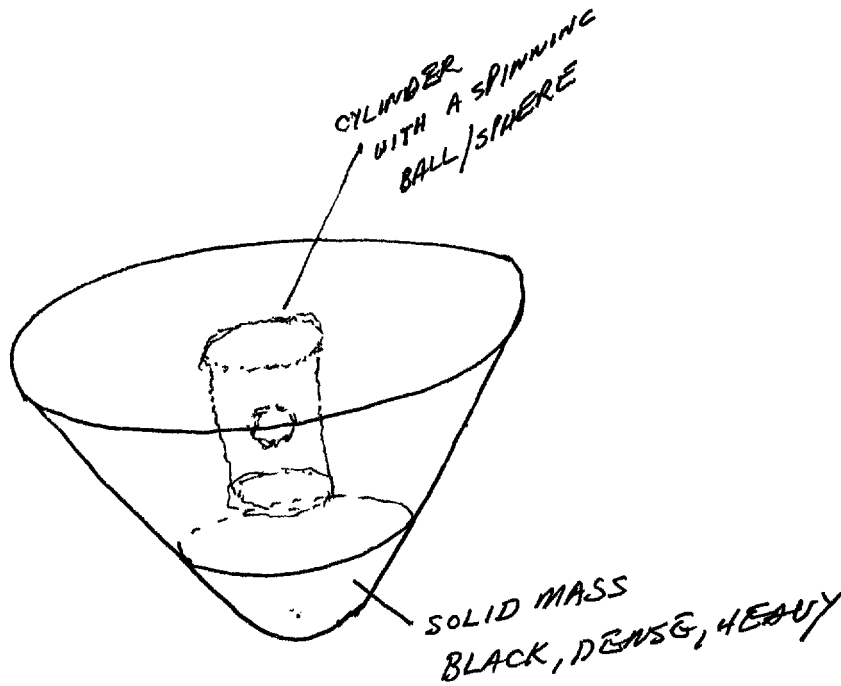


4<sup>1/2</sup> - getting two impressions, one is of a solid black mass - like the whole object is one solid thing.  
- another impression of a cylindrical, cage-like object with a ball or sphere somehow suspended from something or somehow in the middle of this cylinder - the ball is spinning very fast.

ball's function - to remain constant

AOL break  
- like a gyroscope

Dimensions of cylinder - impression, 7-8' in length  
by 3-4' in diameter.



#10- the cylinder has independent movement within object.

