

55 APR 90

SECRET/NOFORN

PROJECT SUN STREAK

WARNING NOTICE: INTELLIGENCE SOURCES AND METHODS INVOLVED

PROJECT NUMBER:	0127C (1ng)	SESSION NUMBER:	1
DATE OF SESSION:	24 APR 90	DATE OF REPORT:	25 APR 90
START:	1435	END:	1520
METHODOLOGY:	CRV	VIEWER IDENTIFIER:	052

1. (S/SK) MISSION: To describe the target sites (The Very Large Antenna Array telescope in New Mexico) in Stage 4 terminology.
2. (S/SK) VIEWER TASKING: Encrypted coordinates only.
3. (S/SK) COMMENTS: No Physical Inclemencies. This was 052's first stage 4 session. The 2 week break from sessions caused by the leave schedule caused a very negative effect on 052. There was some site contact in every stage, but it was minimal. The session was finally ended by objectifying 052's frustration and stopping to prevent more. Because there was such an extremely small amount of discernible data, no session summary was requested for this session. Post session training consisted of a complete review of the session for structural accuracy.
4. (S/SK) EVALUATION: *2*
5. (S/SK) SEARCH EVALUATION: N/A

MONITOR: 018

*Summary provided and per
was desired.*

HANDLE VIA SKEET CHANNELS ONLY

SECRET/NOFORN

CLASSIFIED BY: DIA (DT)
DECLASSIFY: OADR

This document is made available through the declassification efforts
and research of John Greenewald, Jr., creator of:

The Black Vault



The Black Vault is the largest online Freedom of Information Act (FOIA)
document clearinghouse in the world. The research efforts here are
responsible for the declassification of hundreds of thousands of pages
released by the U.S. Government & Military.

Discover the Truth at: <http://www.theblackvault.com>

052

24 Apr 90

Ft. Meade

1435

018

PI: none

AV: none

211265
562112



○ A. Wavy Across
soft

x B. Water

○ A. Angle
hard

⊙ B. Structure

211265
562112



A. Wavy Across
soft
X B. Water

U A. Angle
hard

O B. structure

O A. sloping down
smooth

B. —

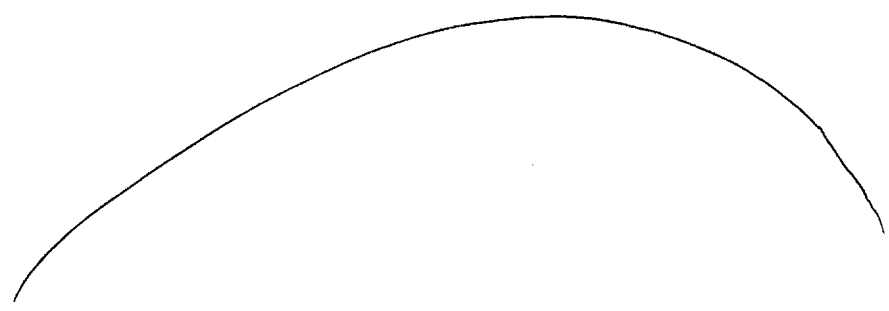
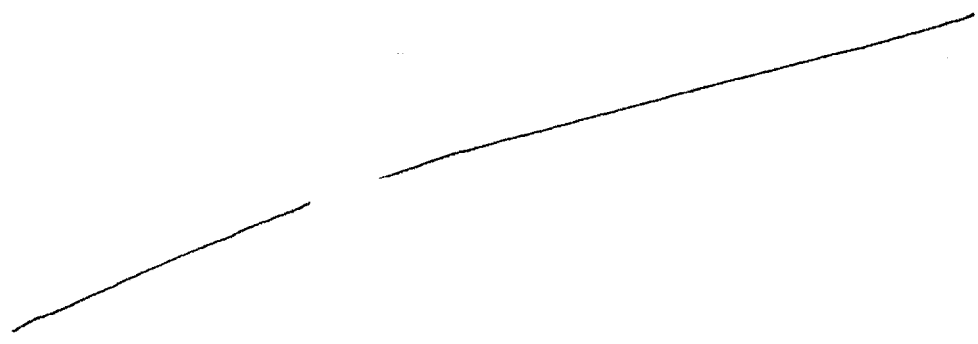
S2

Black

Blue

Brown

choking feeling



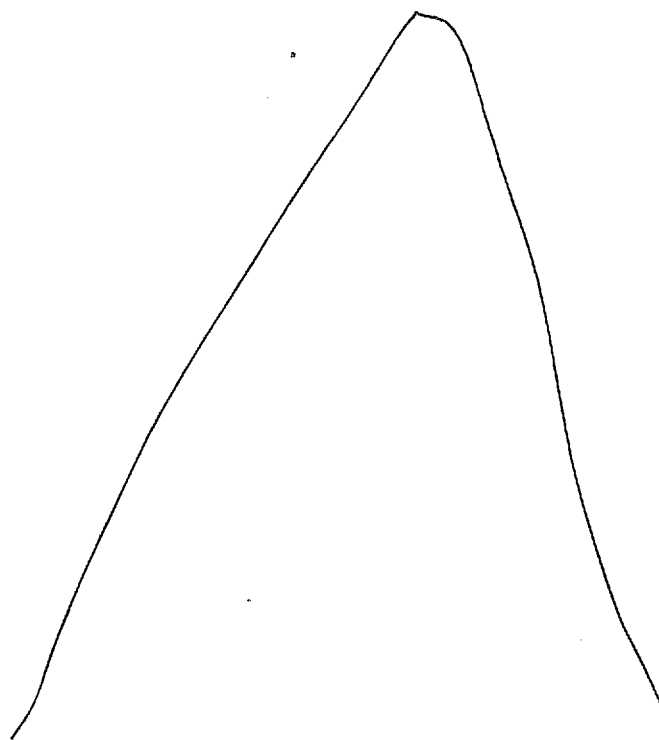
∪ Angles

∪ sharp

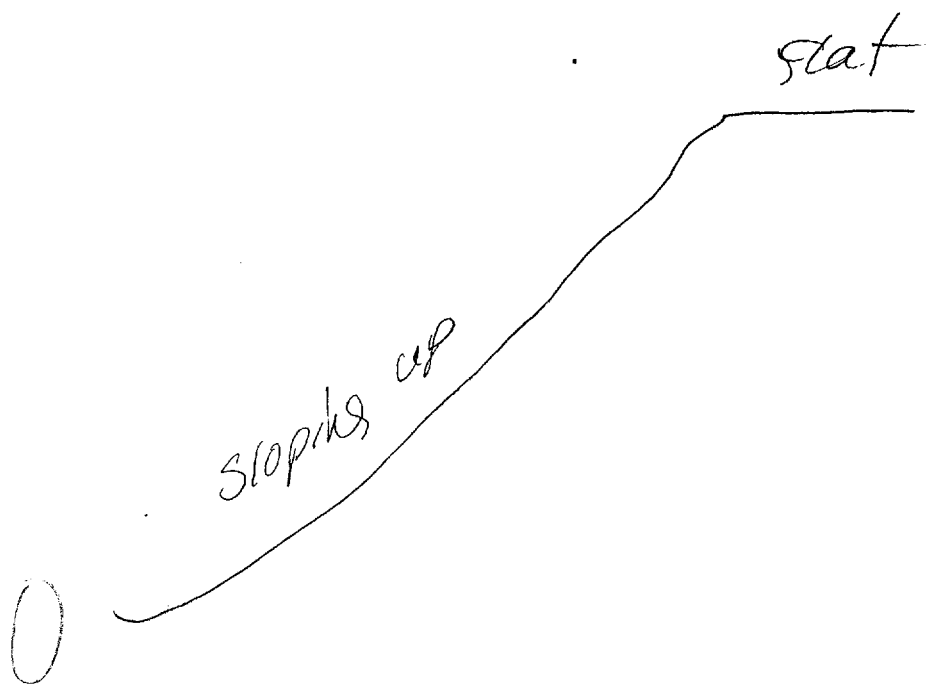
∪ pointed

∪ bright

∪ Red



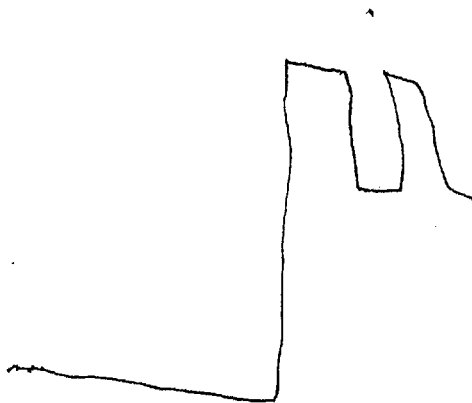
∪ pointed things



Stage 2



Vertical



211265

562112

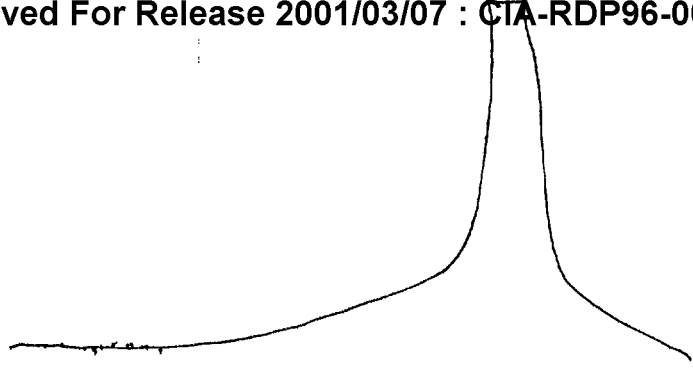
X A. Wavy Across
soft

X B. Water

O A. Angles
hard

O B. Structures

211265
562112



X A . Sloping up
Soft

X B. Land

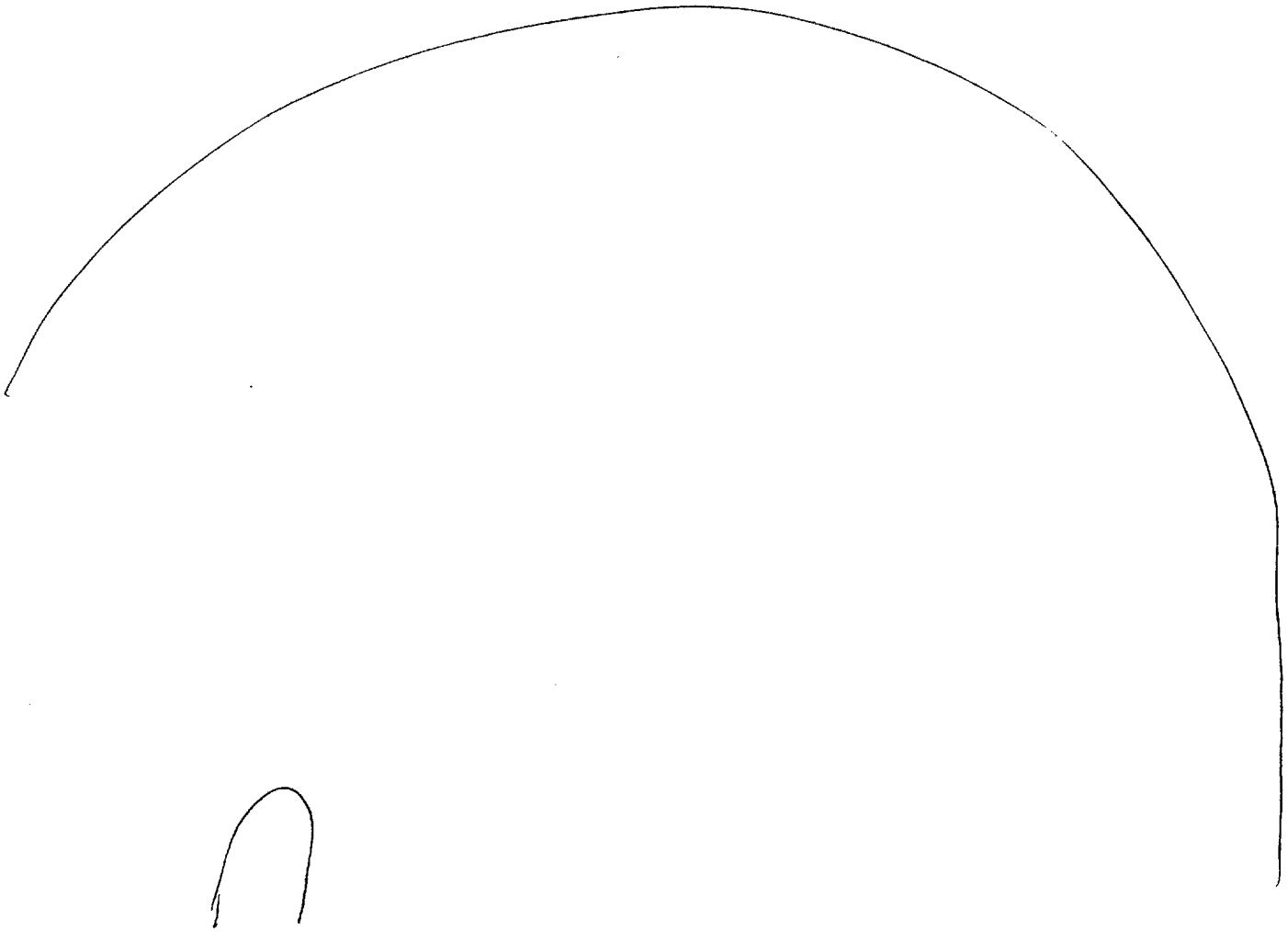
O A . Angle
hard

B. Structure

S2

Black
Blue

Dark



Atoc
Caverns
of
Cappidocia

AOC BK
o desert/
o sand

Blue

o people sounds

o high pitched

AOC
like female

From 500 ft. above
the site, the structures
should be perceivable

Blue

o Bright center

o Dark

DOG sound

ADL BK

Dog shape

TOO much BK

mind is racing.

- o Something in center
- o Surrounded by something else
- o Circular >

ADL BK

M — Stonehengel

AF BK

Frustration.

Seems I forgot how to do this. Haven't done a ~~thing~~ in a while.

S4

S2 D (Circular) AI EI T I AOL A/S
(something)

Green
Round →
Big →

Board

Dark

(pointy things)

Green
Blue

Sharp

Angles

Dirt small

Reel

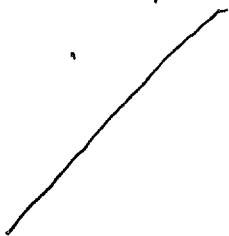
Round

Scan/
System

52 D AI EI T I ADL A/S

Bright

Big



(structures)

pointed

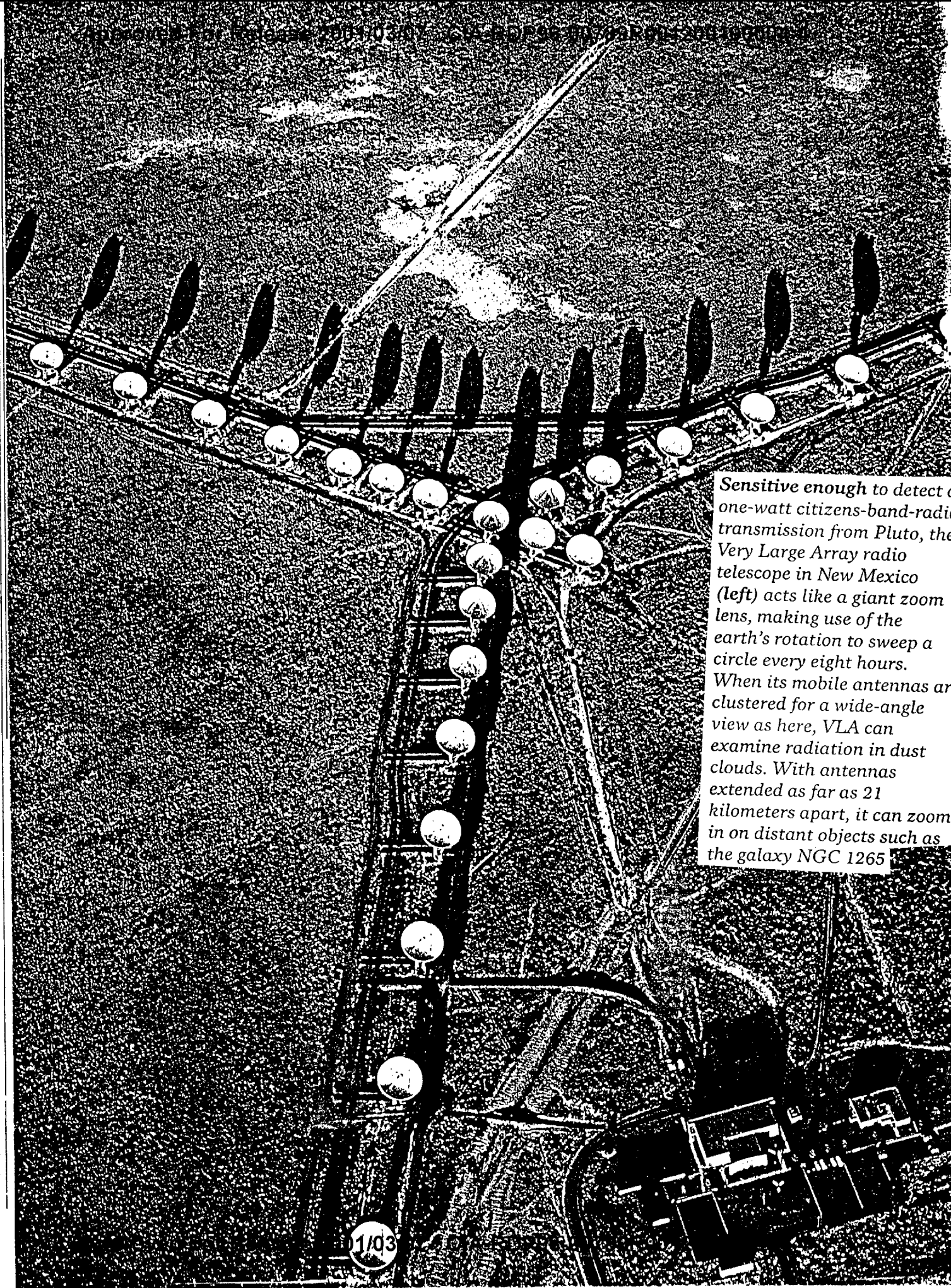
Big

vertical

session end

1520

View from the Array Road telescope view



Sensitive enough to detect a one-watt citizens-band-radio transmission from Pluto, the Very Large Array radio telescope in New Mexico (left) acts like a giant zoom lens, making use of the earth's rotation to sweep a circle every eight hours. When its mobile antennas are clustered for a wide-angle view as here, VLA can examine radiation in dust clouds. With antennas extended as far as 21 kilometers apart, it can zoom in on distant objects such as the galaxy NGC 1265