

J 3 Aug 88

SECRET/NOFORN

PROJECT SUN STREAK

WARNING NOTICE: INTELLIGENCE SOURCES AND METHODS INVOLVED

PROJECT NUMBER: S1 TNG	SESSION NUMBER: 1
DATE OF SESSION: 880803	DATE OF REPORT: 880803
START: 0824	END: 0840
METHODOLOGY: CRV	VIEWER IDENTIFIER: 32

1. (S/NF/SK) MISSION: Access and describe in a stage one sense training target # 99, Lake Titicaca floating village.
2. (S/NF/SK) VIEWER TASKING: Encrypted coordinates 1545/6928.
3. (S/NF/SK) COMMENTS: 032 did a good job on a very difficult site (water/structure interface with no land and structures which are made from entirely natural, soft (reeds) material).
4. (S/NF/SK) EVALUATION: 3.

HANDLE VIA SKEET CHANNELS ONLY
SPECIAL ACCESS REQUIRED

SECRET/NOFORN

CLASSIFIED BY: DIA (DT)
DECLASSIFY ON: OADR

This document is made available through the declassification efforts
and research of John Greenewald, Jr., creator of:

The Black Vault



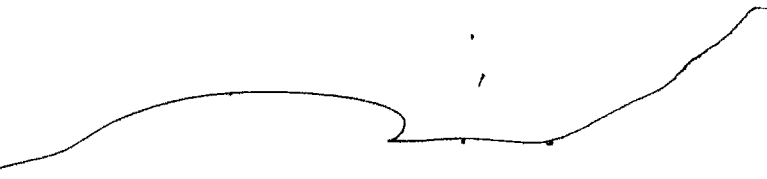
The Black Vault is the largest online Freedom of Information Act (FOIA) document clearinghouse in the world. The research efforts here are responsible for the declassification of hundreds of thousands of pages released by the U.S. Government & Military.

Discover the Truth at: <http://www.theblackvault.com>

AO - 10004
PI - coast

052
3 AUG 88
0824L

1545
6928



A. out, around
in. change
ACROSS, SLOPING
up. vertical
semi soft -
NATURAL

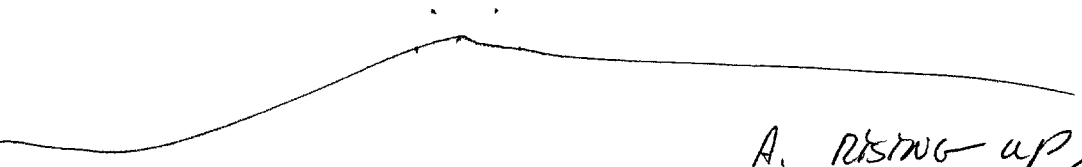
B. SAND

A. Across flat
land,

B. WATER

1545

6928



A. rising up,
SLIGHT PEAK
SLOPING down.
Hard natural

B. MOUNTAIN

1545
6928



MISSER BREAK.

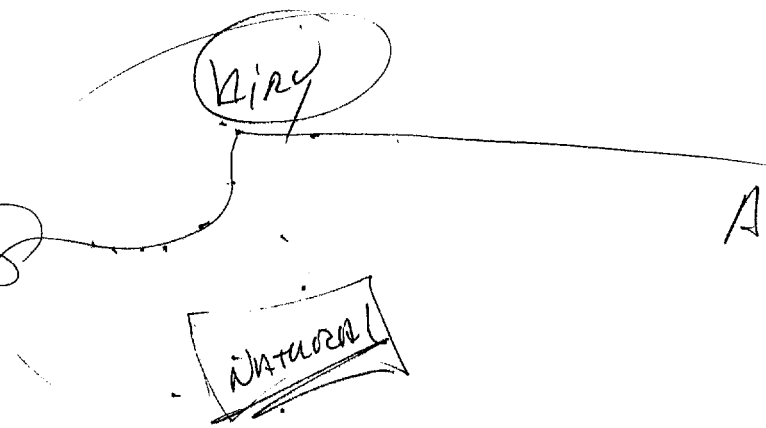
1545
6928



A. RISING UP,
ANGLE FLAT
ACROSS - NO
DOWN.

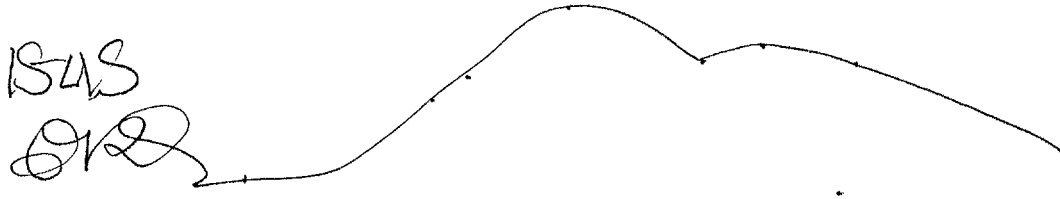
POC BREAK
CONCRETE, STEEL
GLASS.

1548
6928



A. ACROSS RISING
UP STEEP,
ANGLE ACROSS
VERTICAL
SHARP [MM]

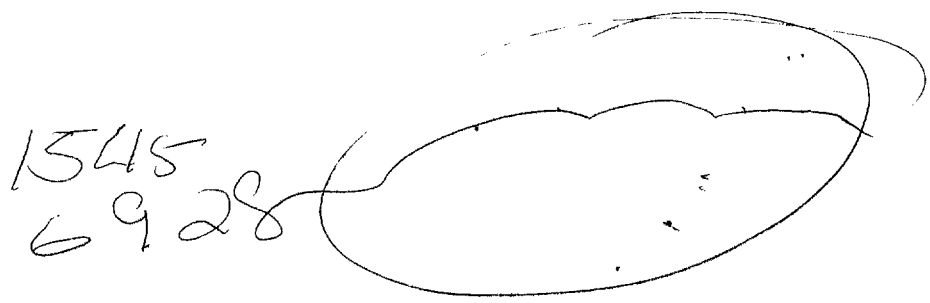
B. STRUCTURE



1545
6928

A. Vertical
Rising up,
ACROSS sloping
Down, rising
up, gradual
slope down,
NATURAL SWI
SOFT, like
veg.

AOL BREAK
Vegetation
Jungle hills



1545
6928

A. wavy, ACROSS
CONFUSION BREAK
feeling.

AOL BREAK

STAND.

1545
0920

- A. RISING UP
ANGLE ACROSS
FLUID / Vent.
M.M.
- B. STRUCTURE

1545
0920

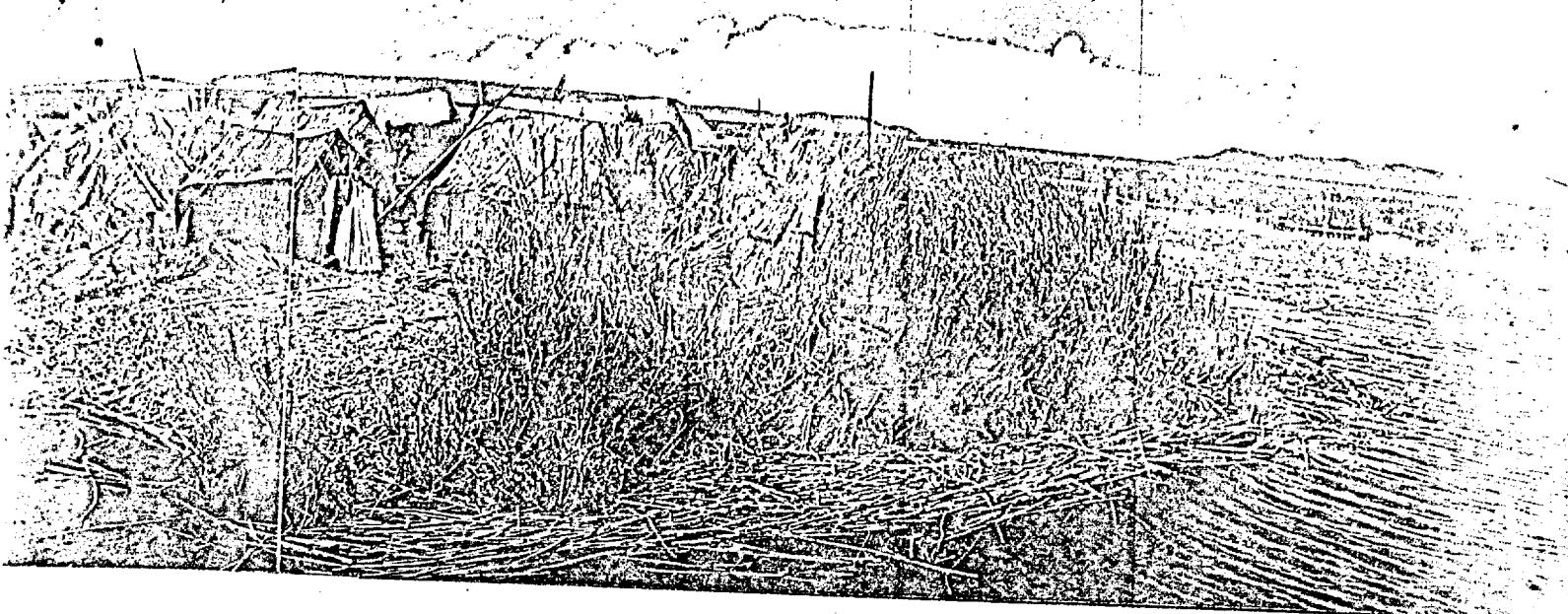
- A. ACROSS IN
out across
Vertical
NATURAL / Semi / Soft
- B. HAND

1545
0920

- A. ACROSS ROLLING
Vertical
FLUID
- B. WATER

SITE

0840



Floating world of the Urus

BOUNTIFUL AND BUOYANT, totora reeds from Titicaca's shallows supply the Urus with material for homes and boats. Reeds even provide the "ground" these fisherfolk walk on, since they live on floating islands (above). As bottom layers rot, the Indians spread new layers on top.

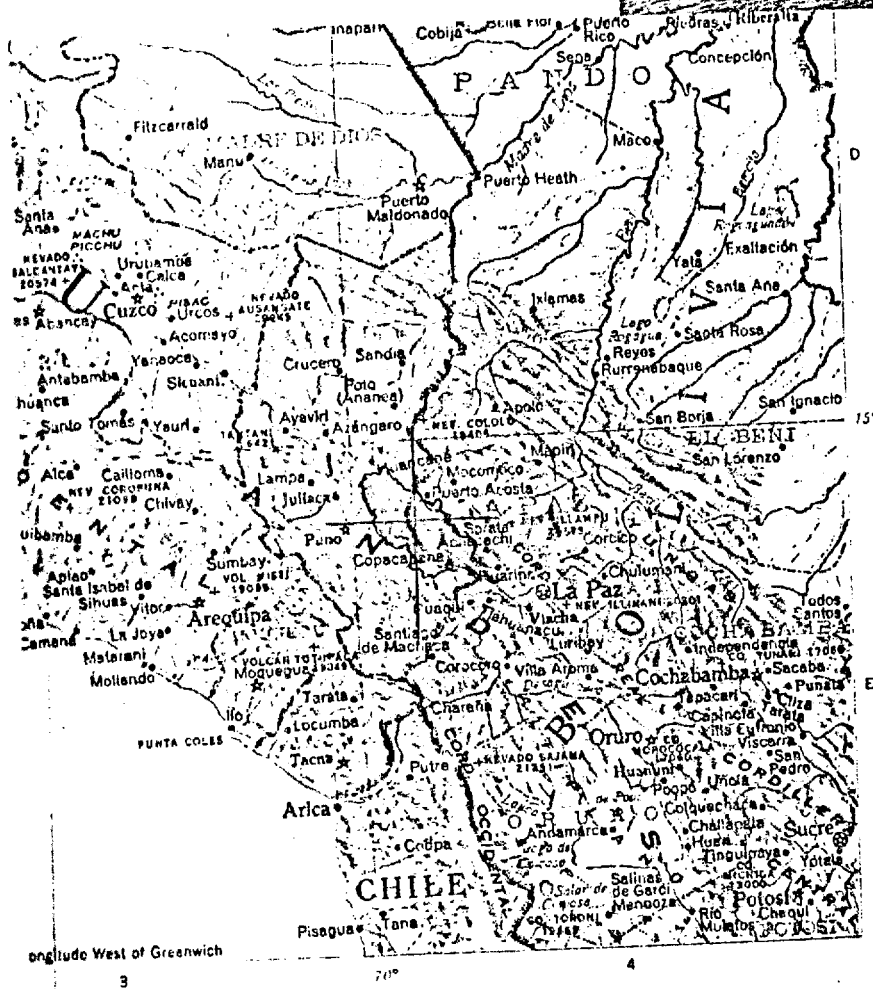
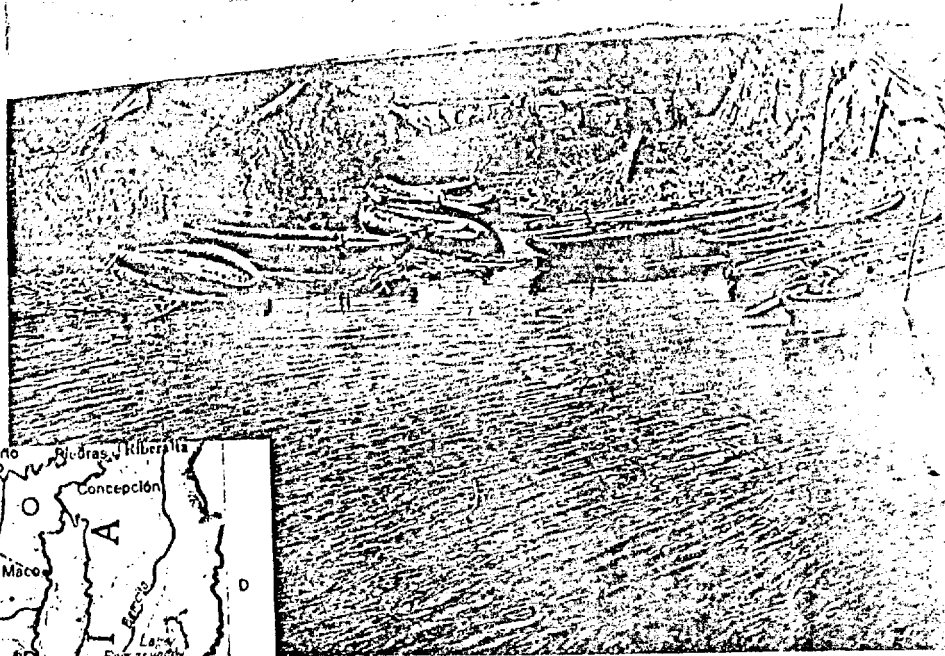
Seated on the spongy surface (left), an Uru woman grinds barley for making gruel or mush.

Like the Aymaras, the Urus fashion boats of totora (below). Norwegian anthropologist Thor Heyerdahl theorizes that their ancestors may have learned the art from ancient Mediterranean mariners who crossed the Atlantic in similar boats of papyrus. Aymaras from Titicaca helped Dr. Heyerdahl construct a seagoing craft to test his theory (see the January 1971 *GEOGRAPHIC*)



CPYRGHT

CPYRGHT



Titicaca Abode of the Sun