

SECRET/NOFORN

PROJECT SUN STREAK

D J O a sh

WARNING NOTICE: INTELLIGENCE SOURCES AND METHODS INVOLVED

PROJECT NUMBER: 54 TRNG

SESSION NUMBER: 1

DATE OF SESSION: 881017

DATE OF REPORT: 881018

START: 1200

END: 1240

METHODOLOGY: CRV

VIEWER IDENTIFIER: 032

1. (S/NF/SK) MISSION: Access and describe in a stage one sense training target # 48, Williamsburg, VA.

2. (S/NF/SK) VIEWER TASKING: Encrypted coordinates 372448/764248.

3. (S/NF/SK) COMMENTS: Perfect session, immaculate adherence to structure throughout. O32 paced himself perfectly throughout the session, particularly in stages 1 and 2. His stage 3 sketching was excellent. All his stage 4's can be attributed to the site. Of note are O32's stage 4's of: historic, old, people shopping, spending, walking, looking, interested, amazed, remembering and gathering information. At the end of the session O32 was told to move to a position 20 miles above the site and to report what he saw, he executed the sketch on page 11 which is an accurate rendering of the Virginia coastline. This sketch is of stage 6 quality. O32 was then moved to a position 40 miles above the site where he reported that the site was in the northern hemisphere, the eastern part of North America. The session ended with O32 attempting a stage 7 (see page 12). He is still locking his mouth in an open position, which prevents consonants from forming. This should be overcome with practice.

Consonants

4. EVALUATION: *1.3*

HANDLE VIA SKEET CHANNELS ONLY
SPECIAL ACCESS REQUIRED

SECRET/NOFORN

CLASSIFIED BY: DIA (DT)
DECLASSIFY ON: OADR

This document is made available through the declassification efforts
and research of John Greenewald, Jr., creator of:

The Black Vault



The Black Vault is the largest online Freedom of Information Act (FOIA) document clearinghouse in the world. The research efforts here are responsible for the declassification of hundreds of thousands of pages released by the U.S. Government & Military.

Discover the Truth at: <http://www.theblackvault.com>

AD - Yes

OLD BUILDING

PI - Yes

CONGESTION

PA

032

17 OCT 88

1200L

372448
764248

A. up. angle
ACROSS
Hard mm
B. STRUCTURE

372448
764248

A. up angle
ACROSS
Hard mm
B. STRUCTURE

SZ

Red
Blue
grey
Black
Rough
Lines

AOL Break
Barn

372445
761240

A. up angle
ACROSS
Hord - mm
B. STRUCTURE
Conf Break
mm vs. natural

372445
764200

A. up angle
ACROSS
incline up
Hord - mm
natural
B. STRUCTURE

SZ

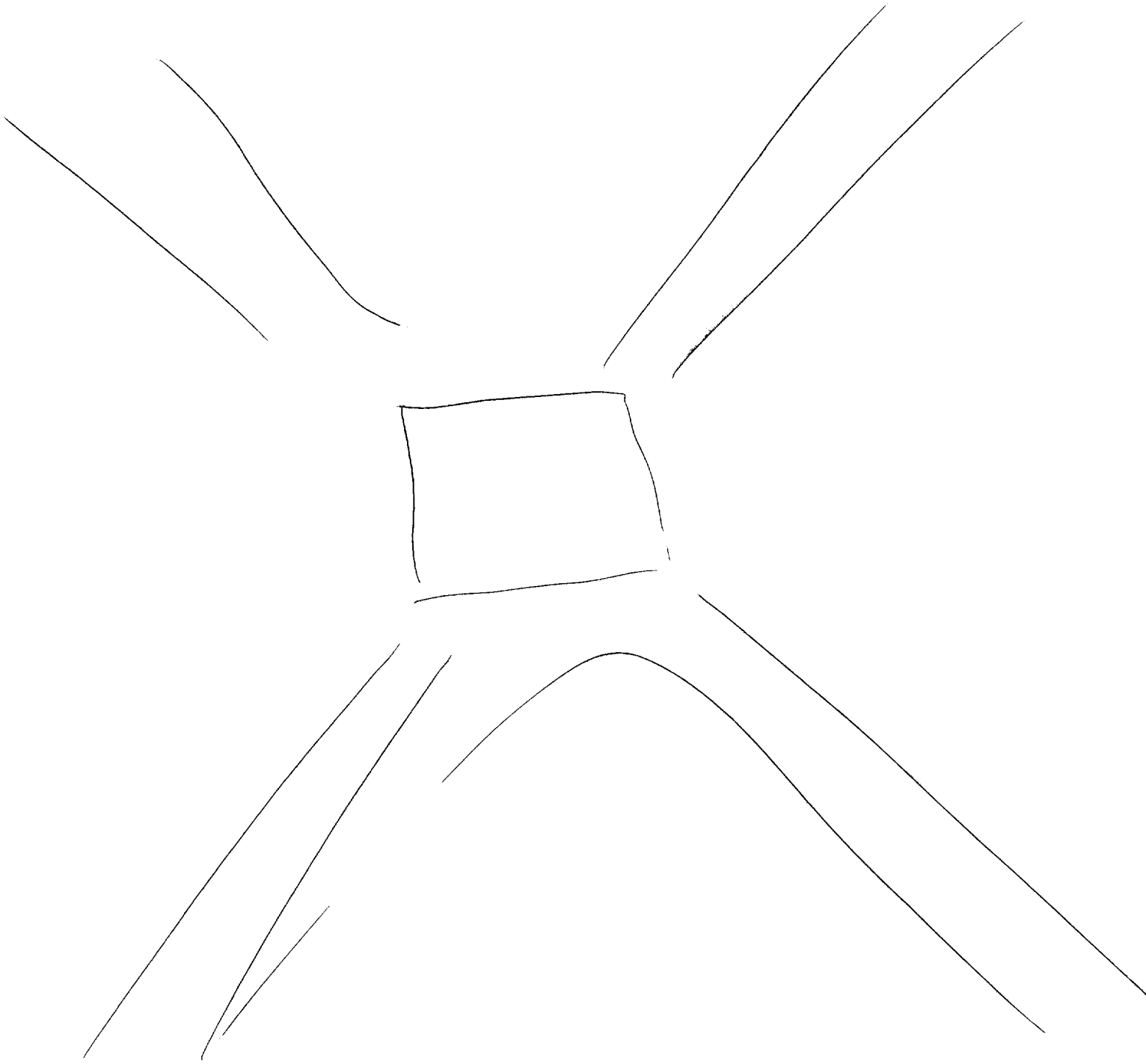
Yellow
Red
Gold
Rough
smooth
lines
down
windy sound
kicks
lines
diagonals
steep diagonals SZ
curic SZ
flat
lines

372445
76V713

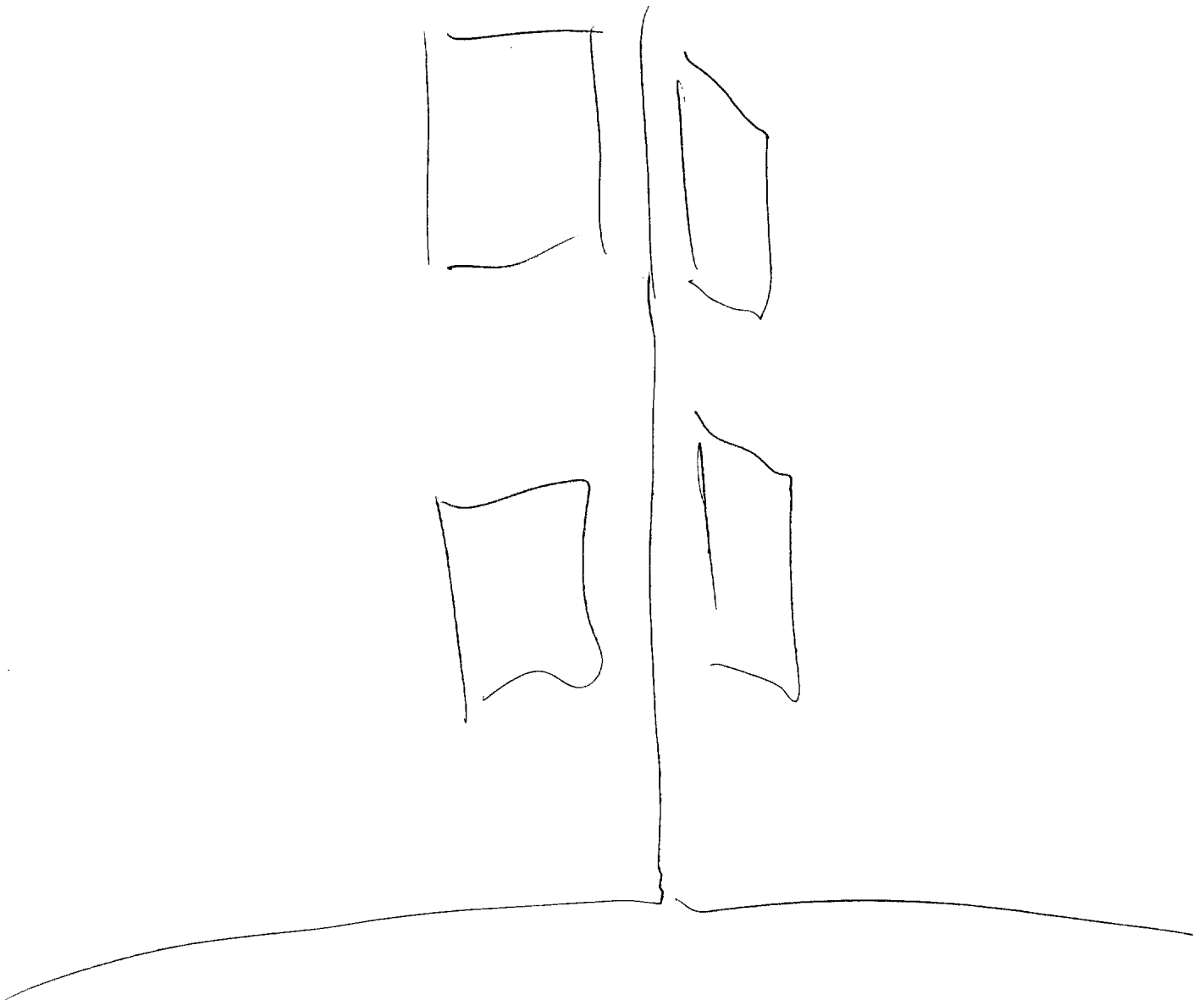
A. up - single
across - inc.
up.
Hard - not
man made
B. STRUCTURE

SZ
warm
boiler
flat
lines
vents
diagonals

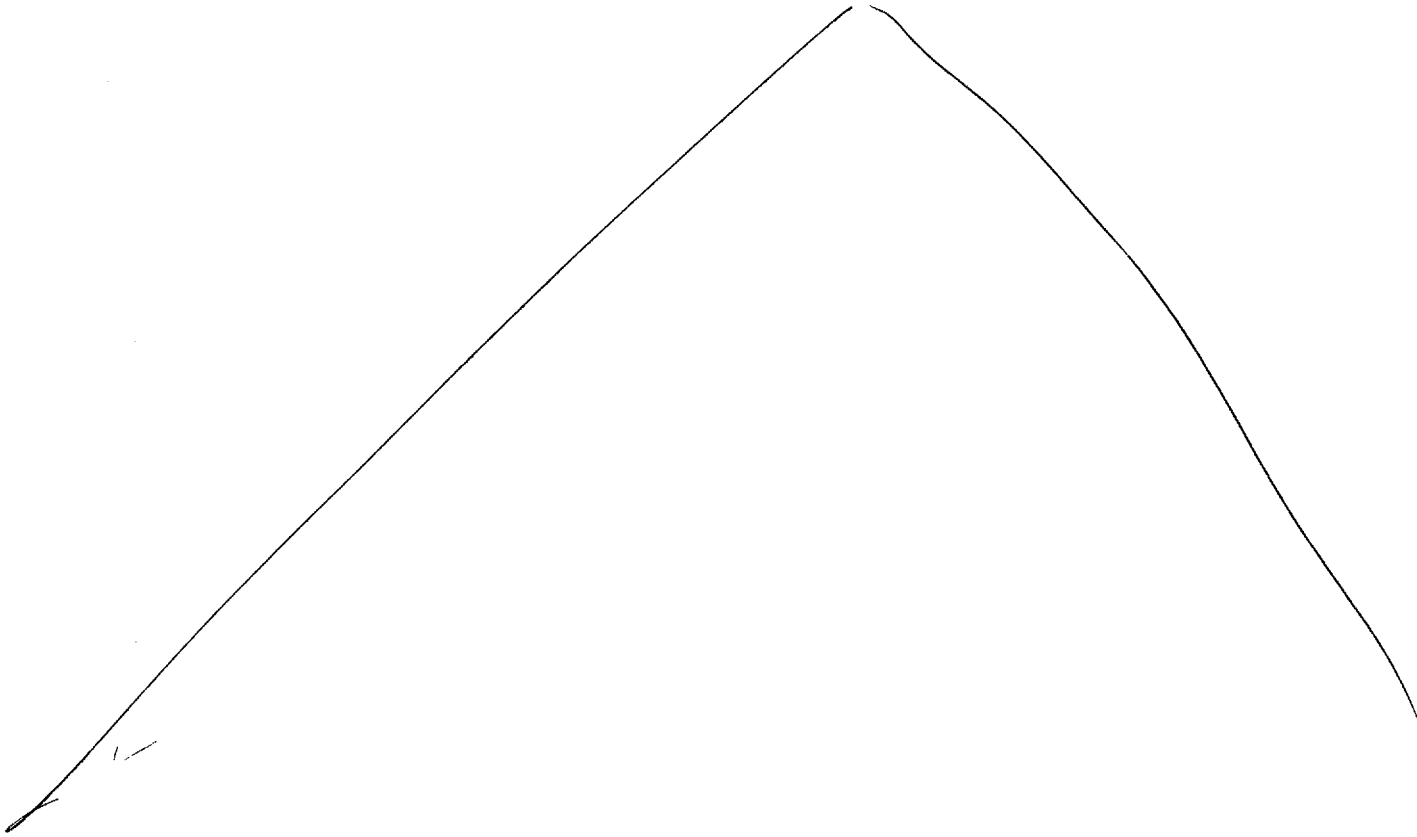
AI Break
makes me feel like
I have vertigo
up high looking
down on
something



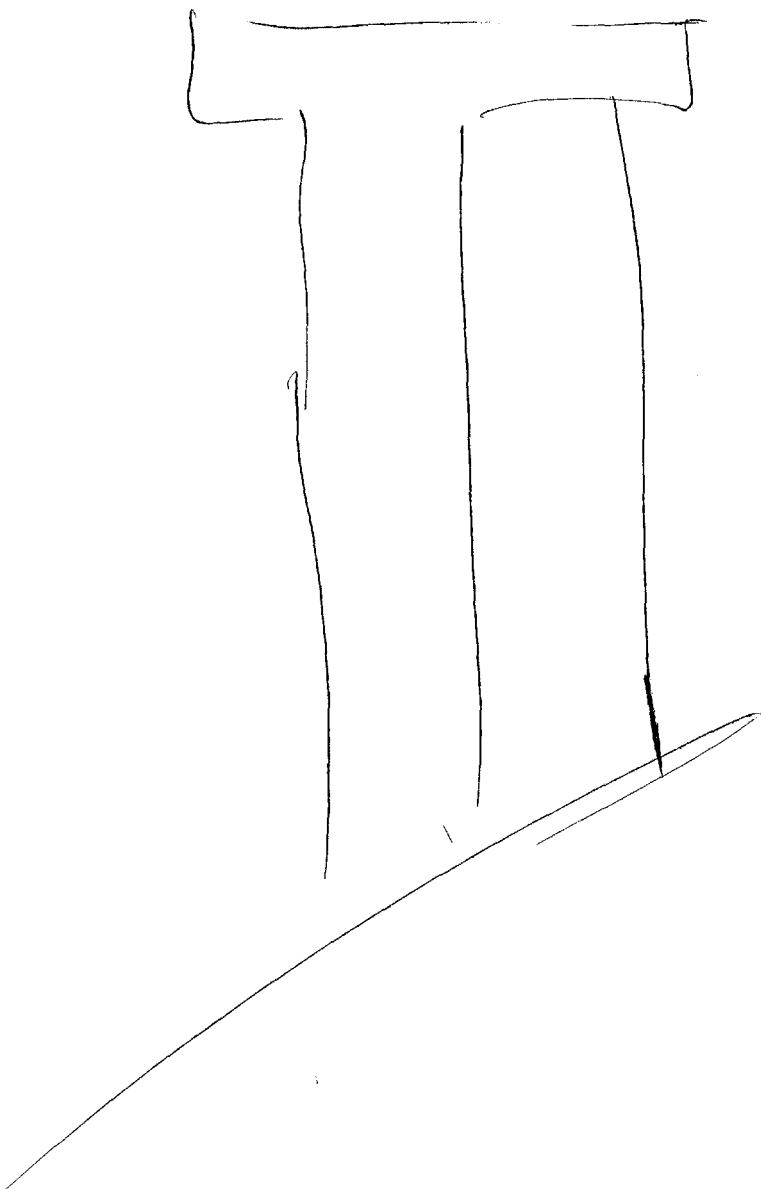
Page 5



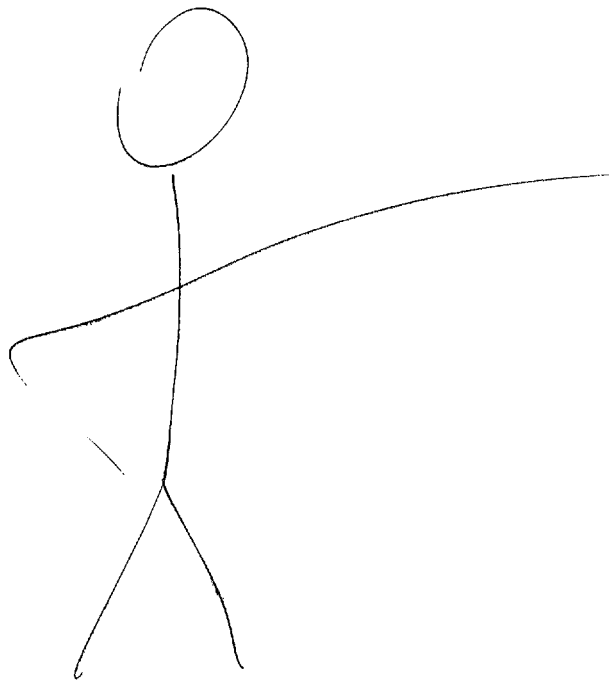
6



7



8



SZ D AF EI T I AOL A/S

red
gold
rough
smooth
lines

CUBIC
slanted

INTERESTING

white
Bright
Warm
windy

cube
Tall
short
square

green
amber

WOOD
METAL

old
new

AOL BREAK
Like a
church ✓

outside
uncovered
Hollow

stone ✓
wood ✓
grass ✓
money ✓
people ✓

lines

Hungry
Informed
Interested

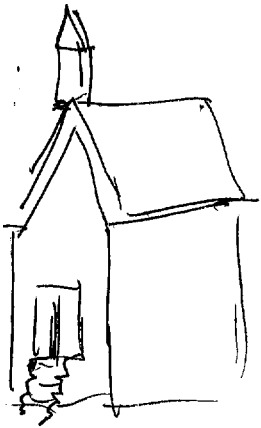
money ✓
music ✓

OLD

52

Grey

Cubic



PEOPLE
FAMILIES

Interested
Spending
Walking
Looking
Mourning

INSIDE
OUTSIDE

AOL ~~REAR~~ SIGNAL
Buildings.

Buildings

Amber
red,
Green.

[INSIDE]

smooth
glassy
rough

cubes
old

People clustered ✓
glass
wood
dust
Historic ✓

old
small

grown

Small
cubie

people

AMAZED
Interested
Proud
Happy

Spending

Remembering

Gathering
Information

STONES

STACKED

SMALL

CLUTTERED

[~~from~~ 20 miles up]

BAY OR
INLET

WATER

TARGET

LAND

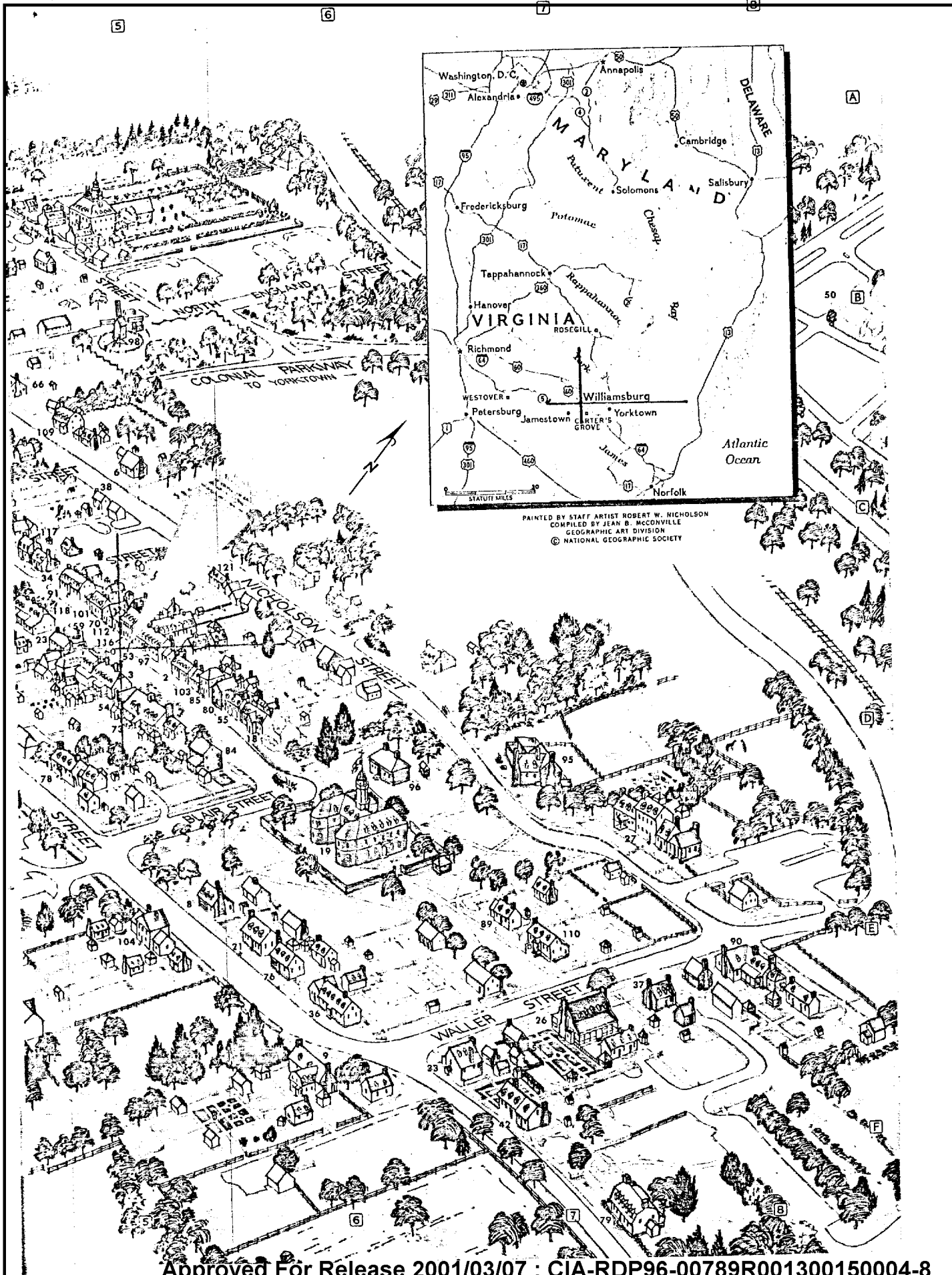


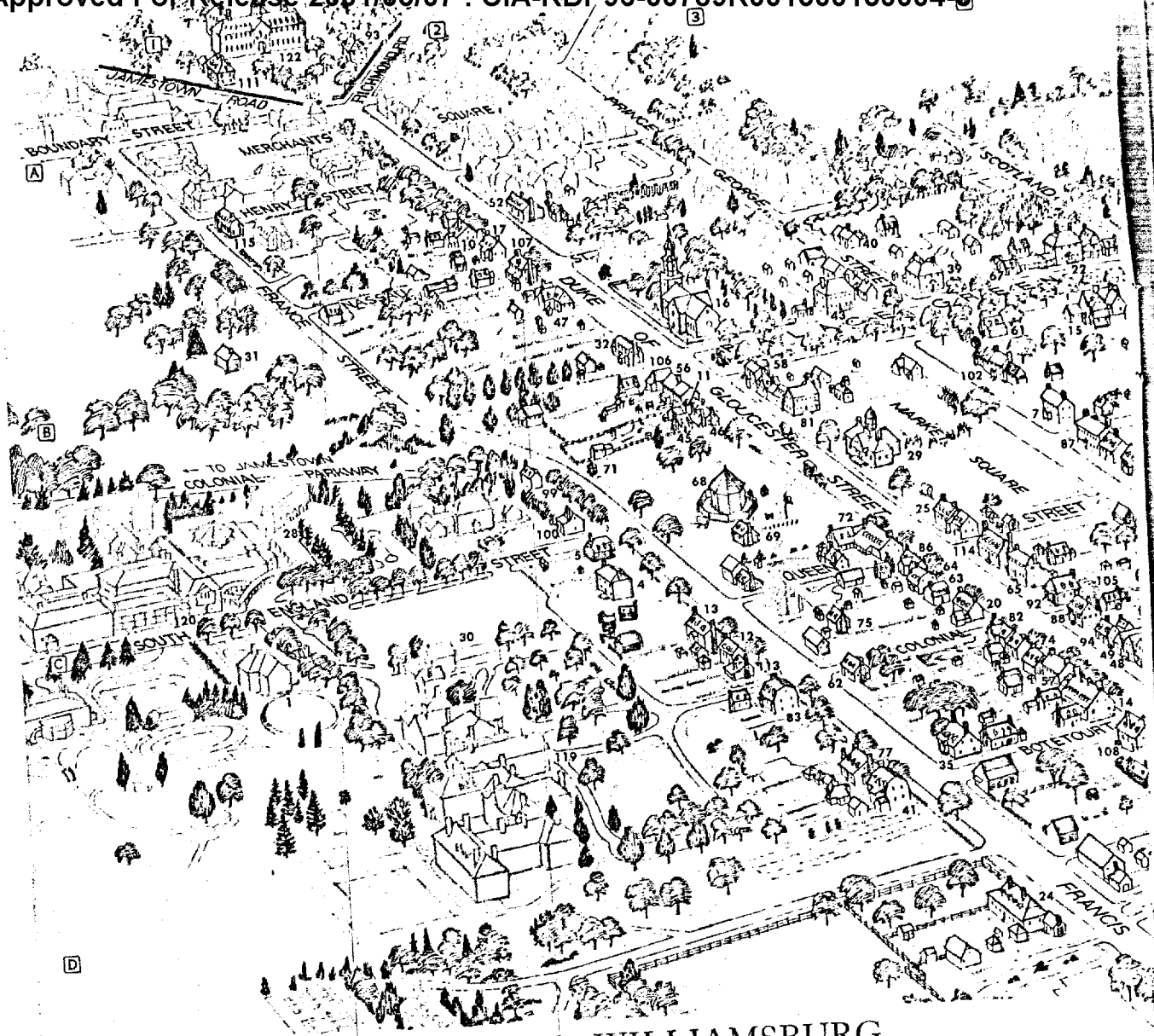
[40 miles up]

NORTHERN - EAST
NORTH AMERICA

HA HILL ERR

END
1240L





COLONIAL WILLIAMSBURG

In this painstakingly restored capital of Virginia, eighteenth-century America lives again for the twentieth century to observe and enjoy. In preparing the painting, the artist has omitted many trees to better show buildings and streets. Only those structures rendered in color are parts of the historic area.

- | | | | |
|---|---|---|---|
| 1. ABBY AIDRICH ROCKEFELLER
FOLK ART COLLECTION C1 | 33. DAVID HORTON HOUSE F6 | 61. LEVINGSTON KITCHEN C3 | 93. PRESIDENT'S HOUSE, COLLEGE
OF WILLIAM AND MARY A2 |
| 2. ALEXANDER CRAIG HOUSE D5 | 34. DAVIDSON SHOP C5 | 62. LEWIS HOUSE C3 | 94. PRINTING OFFICE, POST OFFICE,
AND BINDERY C4 |
| 3. ALEXANDER PURDIE HOUSE D5 | 35. DR. BARRAUD HOUSE C4 | 63. LIGHTFOOT KITCHEN C4 | 95. PUBLIC GAOL D7 |
| 4. ALLEN-BYRD HOUSE C3 | 36. DRAPER HOUSE E6 | 64. LIGHTFOOT HOUSE C4 | 96. PUBLIC RECORDS OFFICE D6 |
| 5. ALLEN-BYRD TENEMENT C2 | 37. ELIZABETH CARLOS HOUSE E7 | 65. LUDWELL-PARADISE HOUSE C4 | 97. RALEIGH TAVERN AND BAKERY B5 |
| 6. ANTHONY HAY'S
CABINET MAKING SHOP C5 | 38. ELIZABETH REYNOLDS HOUSE C5 | 66. LUDWELL TENEMENT B4 | 98. ROBERTSON'S WINDMILL B2 |
| 7. ARCHIBALD BLAIR HOUSE B4 | 39. ELKANAH DEANE HOUSE B4 | 67. MCKENZIE'S APOTHECARY SHOP B3 | 99. ROSCOW COLE LAUNDRY B2 |
| 8. AYSOUGH HOUSE (GUNSMITH) F6 | 40. ELKANAH DEANE SHOP AND FORGE
(BLACKSMITH-HARNESSEMAKER) A4 | 68. MAGAZINE C3 | 100. ROSCOW COLE OFFICE C5 |
| 9. BENJAMIN WALLER HOUSE E5 | 41. EWING HOUSE D4 | 69. MAGAZINE GUARDHOUSE C3 | 101. RUSSELL HOUSE B4 |
| 10. BLAIKLEY-DURFY HOUSE A2 | 42. GEORGE JACKSON HOUSE
AND STORE F7 | 70. MARGARET HUNTER SHOP
(MILLINER) C5 | 102. ST. GEORGE TUCKER HOUSE B4 |
| 11. BOOT AND SHOEMAKER'S SHOP B3 | 43. GEORGE WYTHE HOUSE B4 | 71. MARKET SQUARE PUMP C3 | 103. SCRIVENER HOUSE E5 |
| 12. BRACKEN-CARTER HOUSE C3 | 44. GOVERNOR'S PALACE B5 | 72. MARKET SQUARE TAVERN D5 | 104. SEMPLE HOUSE C4 |
| 13. BRACKEN HOUSE C4 | 45. GREENHOW-REPTON
BRICK OFFICE B3 | 73. MARY'S ORDINARY C4 | 105. SIGN OF THE RHINOCEROS C4 |
| 14. BRICK HOUSE TAVERN C4 | 46. GREENHOW-REPTON HOUSE B3 | 74. MARY STITH SHOP C4 | 106. SPINNING HOUSE B3 |
| 15. BRUSH-EVERARD HOUSE B4 | 47. HARTWELL PERRY'S ORDINARY B3 | 75. MASOONIC KITCHEN C4 | 107. TALIAFERRO-COLE HOUSE A2 |
| 16. BRUTON PARISH CHURCH B3 | 48. HOLTS STOREHOUSE C4 | 76. MOIR SHOP E6 | 108. TARPLEY'S STORE C4 |
| 17. BRYAN HOUSE A2 | 49. HUNTER'S STORE B8 | 77. MOODY HOUSE C4 | 109. TAYLOR HOUSE E7 |
| 18. BURDETTE'S ORDINARY D6 | 50. INFORMATION CENTER F7 | 78. NELSON-GALT HOUSE F7 | 110. THE BLUE BELL A1 |
| 19. CAPITOL E6 | 51. ISHAM GODDIN SHOP A2 | 79. NICOLSON HOUSE D5 | 111. THE BRAFFERTON
THE GOLDEN BALL (CLOCKMAKER,
JEWELER ENGRAVER) D5 |
| 20. CAPTAIN ORR'S DWELING C4 | 52. JOHN BLAIR HOUSE D5 | 80. NICOLSON SHOP B3 | 112. THE QUARTER C4 |
| 21. CARTER-MOIR HOUSE C4 | 53. JOHN CARTER'S STORE D5 | 81. NEWTON-COLE HOUSE B3 | 113. THE RED LION A1 |
| 22. CARTER-SAUNDERS HOUSE D5 | 54. JOHN COKE OFFICE D5 | 82. ORLANDO JONES HOUSE C4 | 114. TRAVIS HOUSE D5 |
| 23. CHARLTON HOUSE E4 | 55. JOHN CRUMP HOUSE D5 | 83. PALMER HOUSE D5 | 115. UNICORN'S HORNS C3 |
| 24. CHISWELL BUCKTROUT HOUSE D4 | 56. JOHN GREENHOW HOUSE
AND STORE B3 | 84. PASTEUR-GALT
APOTHECARY SHOP D5 | 116. WATERS-COLEMAN HOUSE C5 |
| 25. CHOWNING'S TAVERN B4 | 57. JAMES ANDERSON HOUSE C4 | 85. PETER HAY'S SHOP C4 | 117. WATERS-COLEMAN HOUSE C3 |
| 26. CHRISTIANA CAMPBELL'S TAVERN E7 | 58. JAMES GEDDY HOUSE AND SHOP
(SILVERSMITH) C3 | 86. PENTON RANDOLPH HOUSE B4 | 118. WILLIAMS-BURN'S TAVERN C2 |
| 27. COKE-GARRETT HOUSE B1 | 59. KING'S ARMS BARBER SHOP
(WIGMAKER) B3 | 87. PITT-DIXON HOUSE C4 | 119. WILLIAMSBURG INN C1 |
| 28. CONFERENCE CENTER B4 | 60. KING'S ARMS TAVERN D5 | 88. POWELL'S TENEMENT E7 | 120. WILLIAMSBURG LODGE C5 |
| 29. COURTHOUSE OF 1770 C2 | | 89. POWELL-WALKER HOUSE C5 | 121. WILLIAM RANDOLPH LODGINGS A2 |
| 30. CRAFT HOUSE B1 | | 90. PRENTIS HOUSE C4 | 122. WREN BUILDING A2 |
| 31. CUSTIS KITCHEN B1 | | 91. PRENTIS STORE C4 | |
| 32. CUSTIS-MAUPIN HOUSE B3 | | 92. PRENTIS STORE C4 | |