

Paul  
20 Nov 84  
10:09

31° 19' N.  
35° 21' E.



003  
051

1009

1022 B.

An angular  
solid

S-2  
brown pc  
irregular c  
sloping pc  
sharp edges cft  
vertical lines pc  
layers c  
dark grey pc  
fissured c  
curved pc  
high c  
wide c  
immense c  
conning over  
AI Break grandiose

rust red pc  
rocks c  
Smooth fls  
washers c



Forest of Masada  
above the  
Dead Sea



A-3

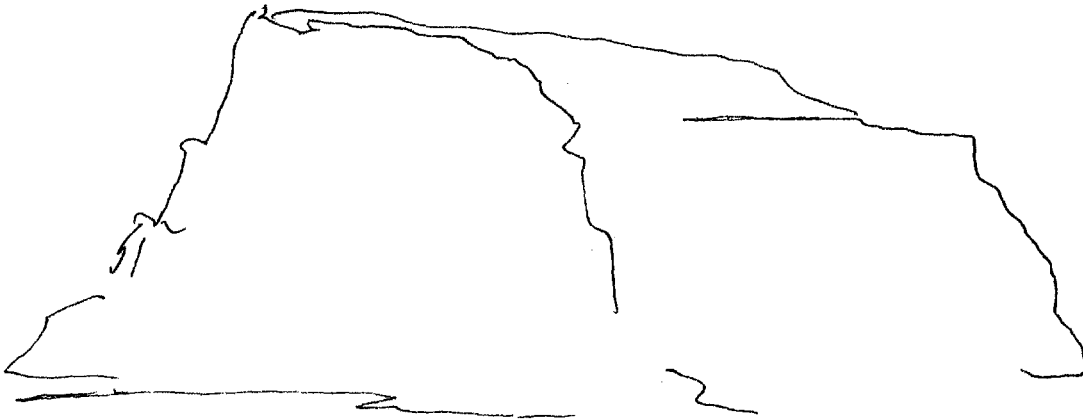
This document is made available through the declassification efforts  
and research of John Greenewald, Jr., creator of:

# The Black Vault

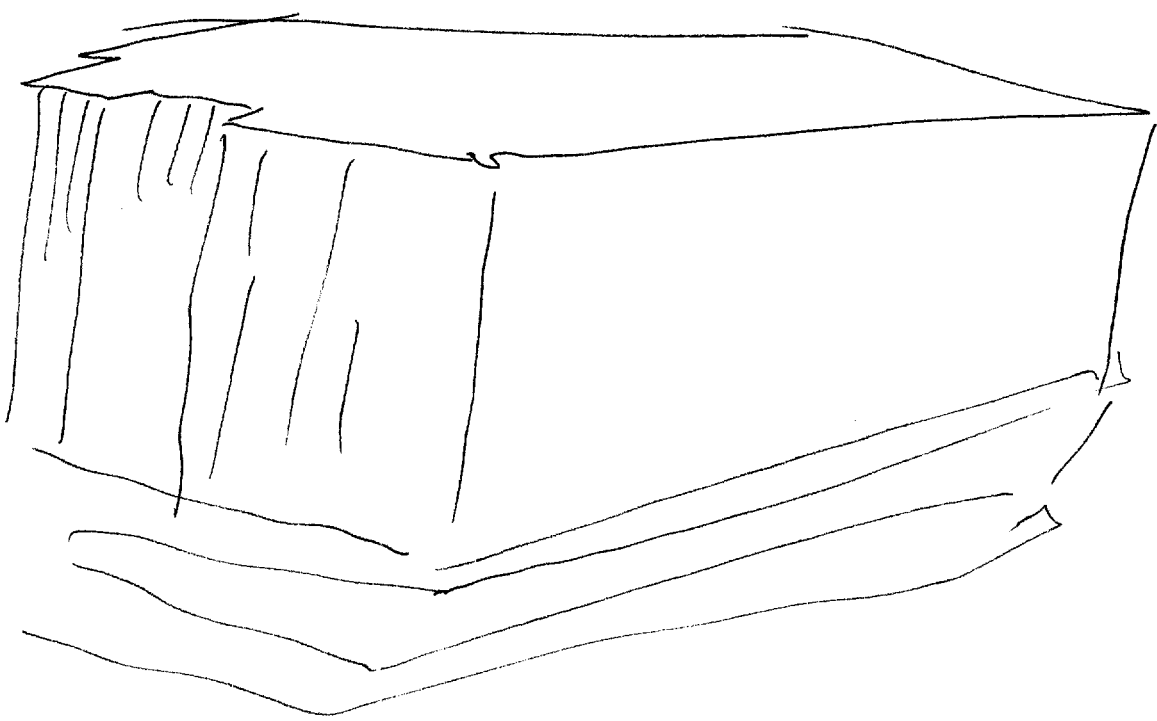


The Black Vault is the largest online Freedom of Information Act (FOIA) document clearinghouse in the world. The research efforts here are responsible for the declassification of hundreds of thousands of pages released by the U.S. Government & Military.

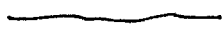
**Discover the Truth** at: <http://www.theblackvault.com>



AOL Break  
half-down at  
Yosemite



31° 19' N.  
35° 21' E.



A. across  
fluid  
B. water n  
conjunction break

31° 19' N.  
35° 21' E.



A. across  
waves  
B. Sand pc

S-2  
light tan c  
clay c  
waxy c  
deserty c  
light vegetation pc  
undulating cft  
blocky c  
disjointed cft

AOZ Break  
How Simul

31° 19' N.  
35° 21' E.



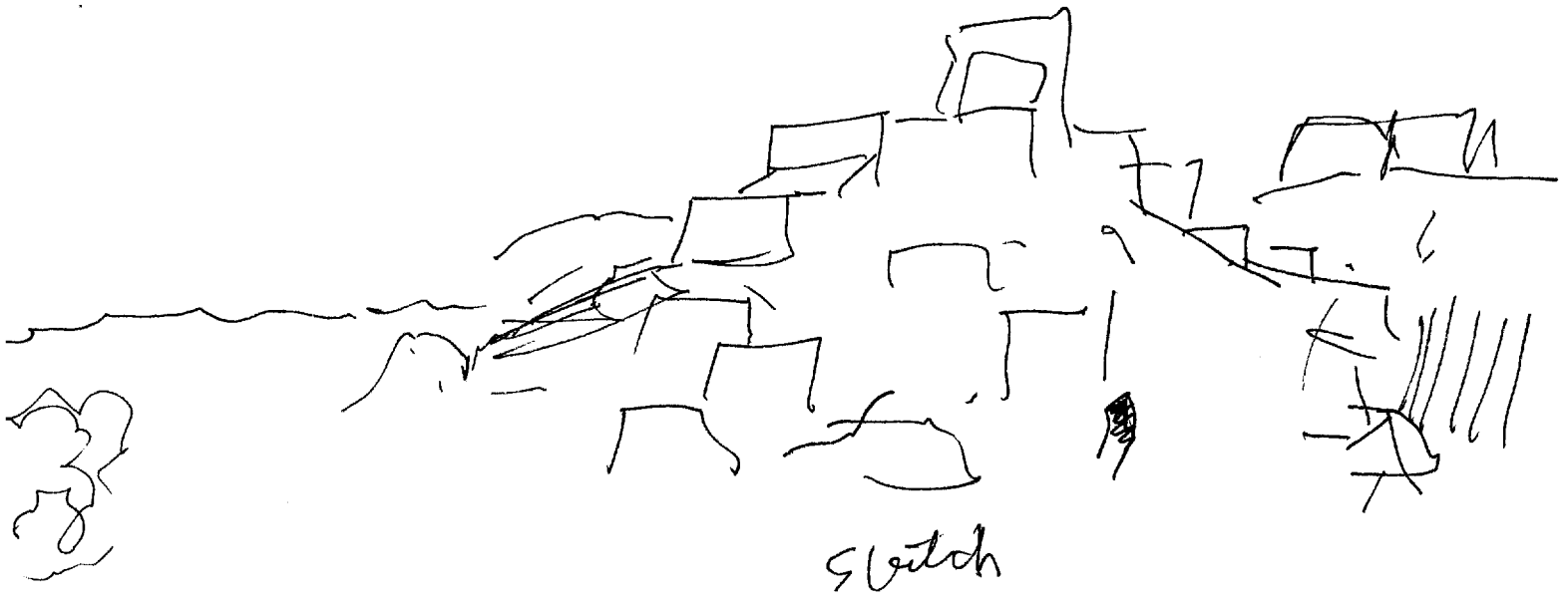
A. stepped  
solid  
B. structure c

S-2

corners c  
rough hewn c  
tumbled c  
Olive color pe  
abandoned pe  
desert smell c  
piled c  
pyramidal cft  
levels c  
massive c  
solid c  
monumental c  
AZ Breckle Impression

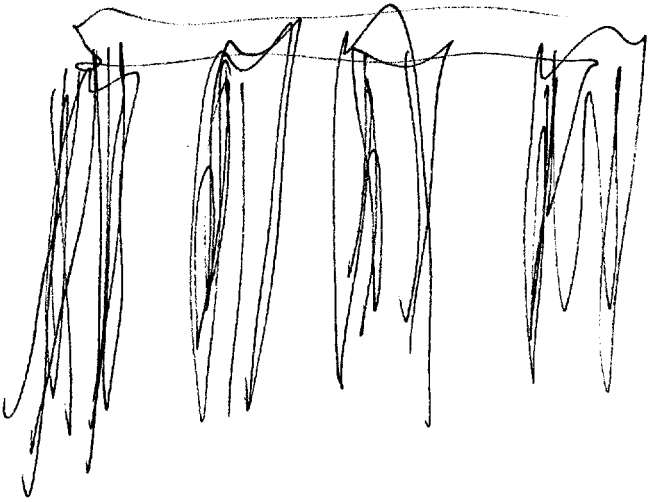


SK.

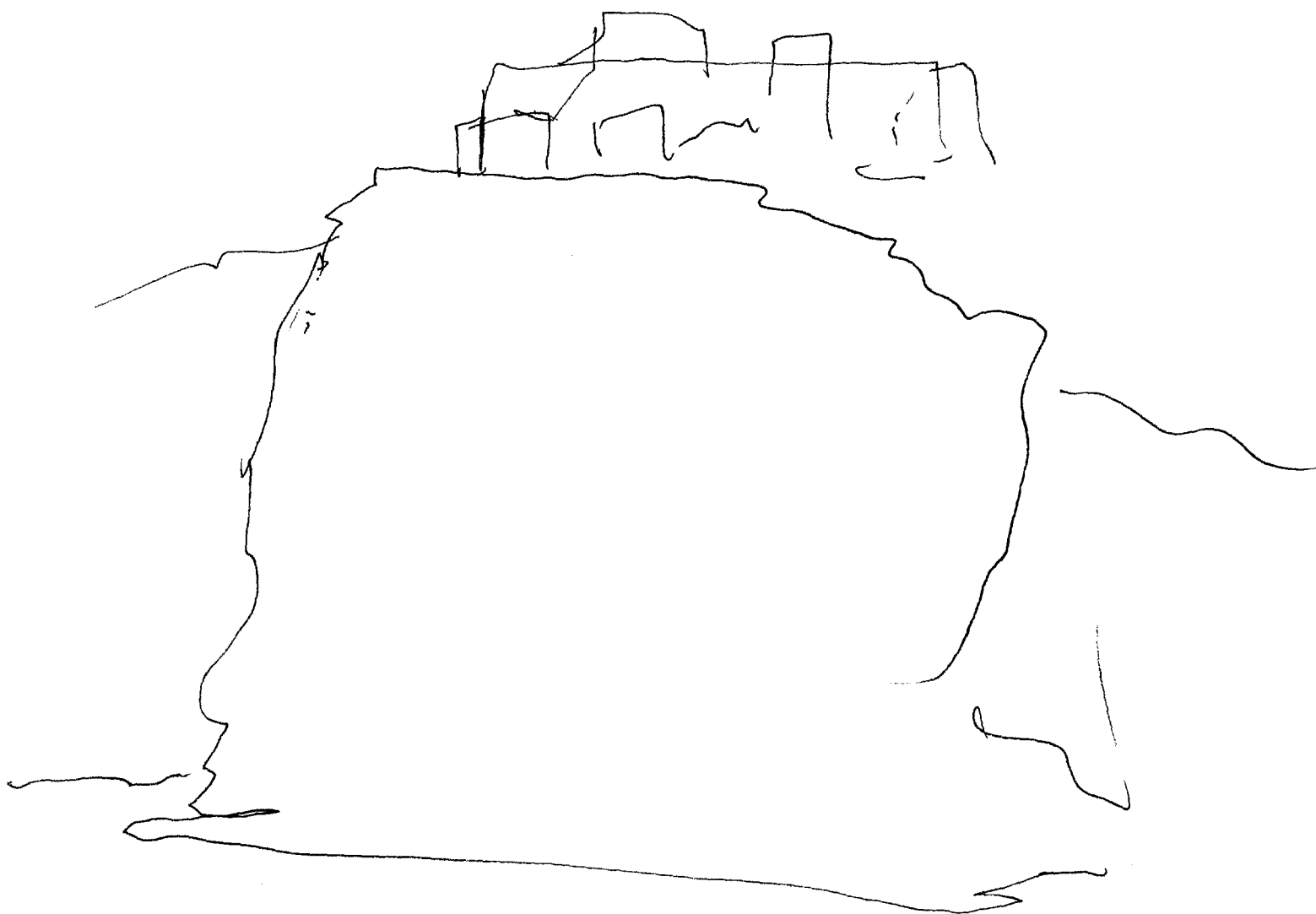


Sketch

ADL Break  
Auroropolis

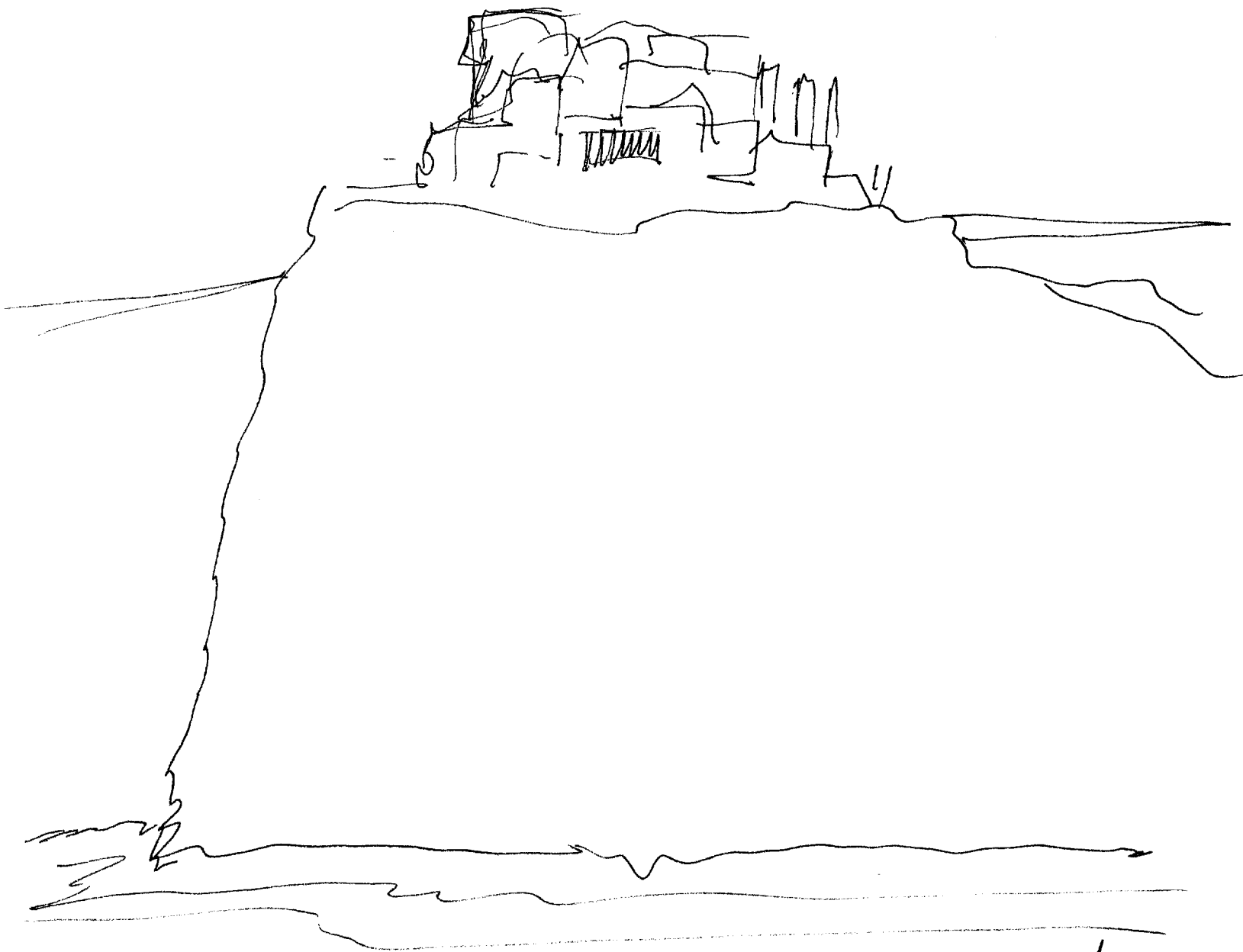


Summary  
 Structure in a desert setting  
 layers vertical lines  
 fissured, chiseled. High, wide, immense, towering,  
 monumental, blocky, rambling, rough hewn,  
 ochre,



*Sketch*



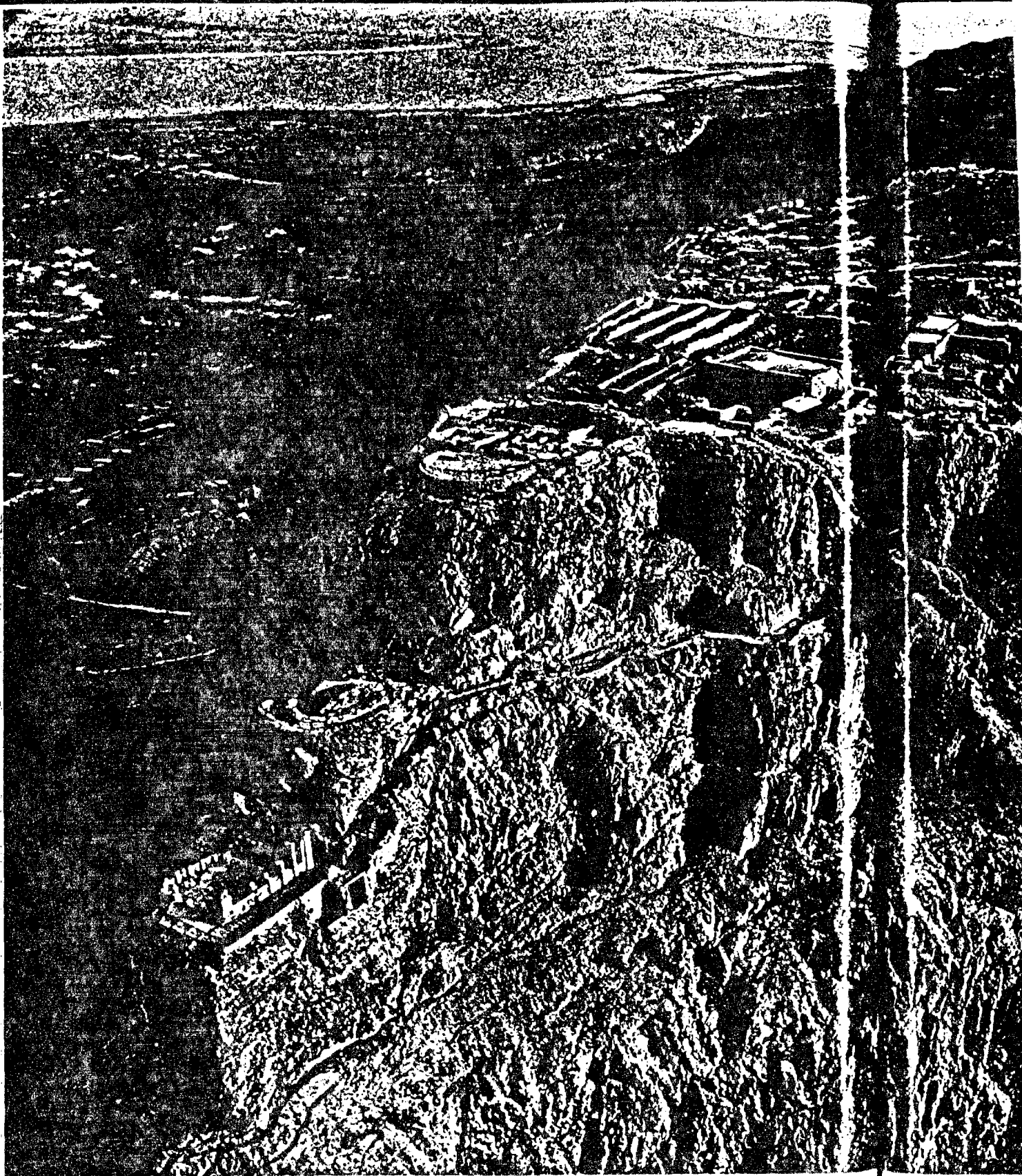


Structure on a  
high terrain feature

AOL Break  
for trees, guardhouses  
& valley

1022

Site end.



*Shiplike fortress of Masada rides at eternal anchor above the Dead Sea here.*  
Approved For Release 2001/03/07 : CIA-RDP96-00789R001700350001-5