

Paul
28 Nov 84
11:12

41° 2' N.
28° 57' E.



41° 2' N.
28° 57' E.



003
05-1
11-12
11-18 A.

confusion break



A. round
hard



B.

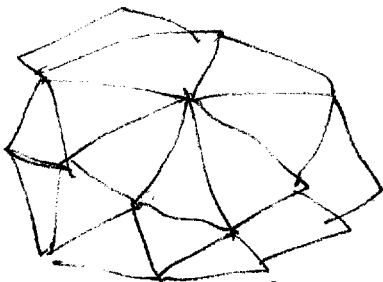
- 3-2
- faceted c
- domed c
- shiny cfr
- arches pr
- geometrical c
- broad hemispherical c
- vast volume cfr
- cleverly cfr
- ribbed up c
- water n.
- triffin sounds c
- exposed/open pr
- large c
- ironing c

AI break
aesthetically pleasing

light color c
geodesic dome

Blade
of aniline
Empire

ACL Brack
geodesic
dome



This document is made available through the declassification efforts
and research of John Greenewald, Jr., creator of:

The Black Vault



The Black Vault is the largest online Freedom of Information Act (FOIA)
document clearinghouse in the world. The research efforts here are
responsible for the declassification of hundreds of thousands of pages
released by the U.S. Government & Military.

Discover the Truth at: <http://www.theblackvault.com>

ADL Breaks
Sydney Opera house

ADL Breaks
DEW line
radar dome



ADL sketch

Cold cfb
Snowy cfb
irrigated c
darker c
water c
cavernous c
fiars c
spiral c



ADL Breaks
Blue Mosque
Istanbul

ADL Breaks
Taj Mahal



Site
end

for Brook
mosque or
church feel

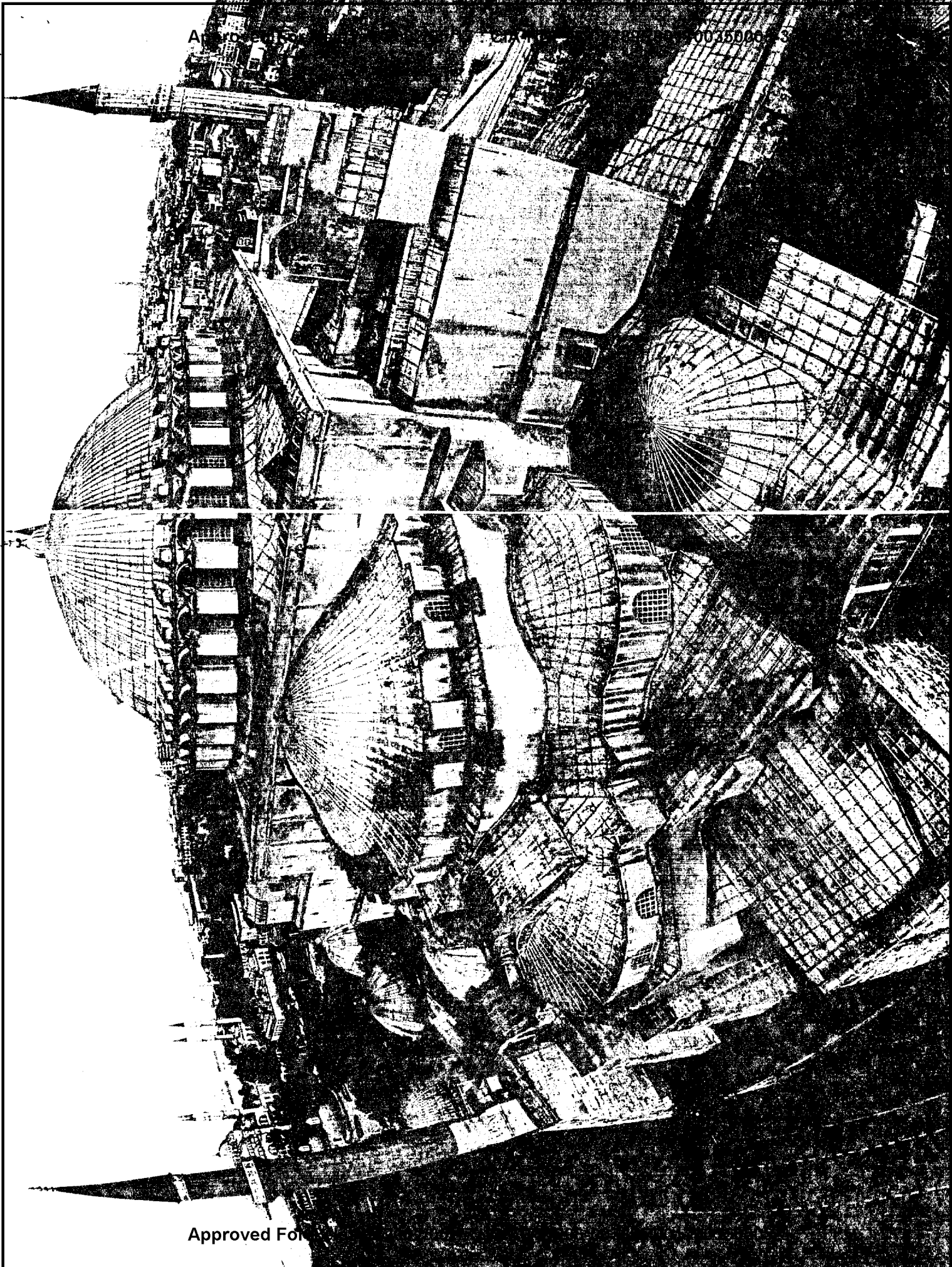
End
11/18

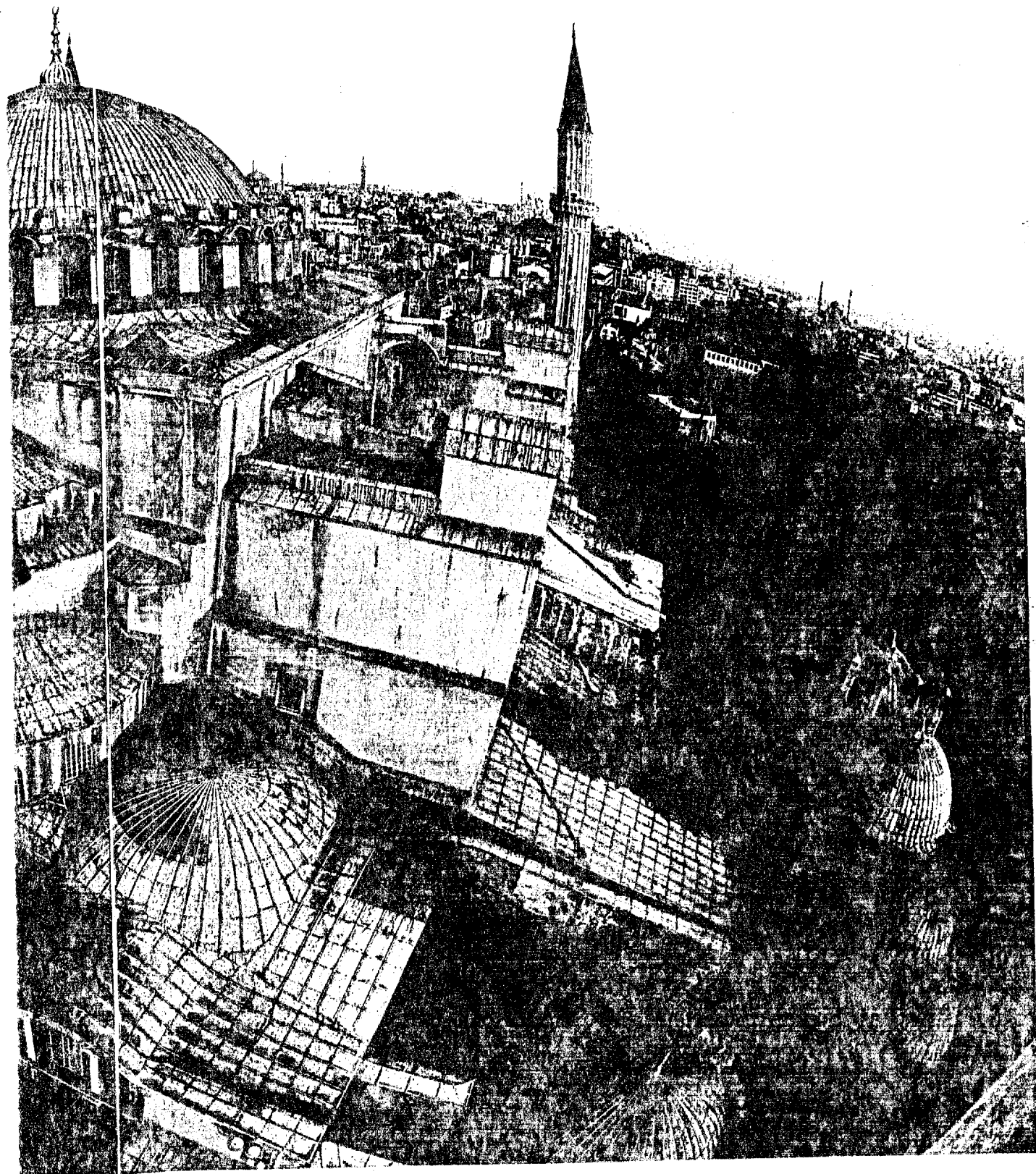
Hosie Sophia

A

0035000-8

Approved For





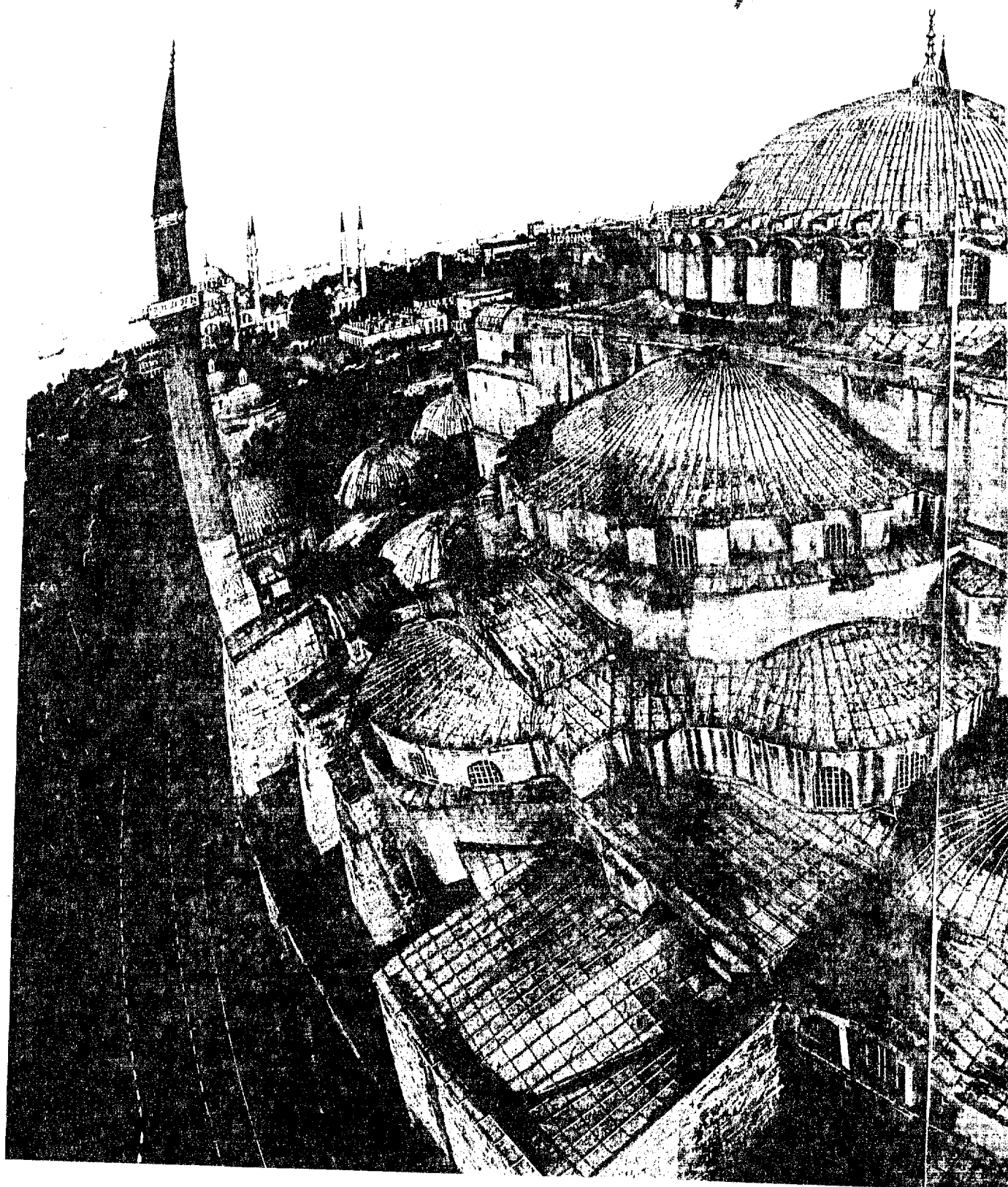
had been destroyed, along with much of Constantinople, during riots that nearly deposed him. Muslim minarets rose after the city fell to the Ottoman Turks in 1453.

hat

083

The Byzantine Empire

725



Once the world's largest church, now a museum, Hagia Sophia was dedicated 1,446 years ago by Justinian, who built it on the foundation of an earlier church that

