

Paul
9 Oct 83
15:28

53° 00' 50" N.

9° 36' W.

003
05)
1528

A. miss break

53° 50" N.

9° 36' W.

1615
II

A. across
windy

Confusion Break

53° 50" N.

9° 36' W.



A. across
flat
hard

B. land c

A. windy
wiggly
fluid

B. water c

- S-2
- white c
- cream color c
- Striated c
- rough
- sandy c
- rounded
- Vegetated c
- Colors cft
- Wind sounds c
- pink cft
- red cft
- Podded cft

Stone houses
Juelark

This document is made available through the declassification efforts
and research of John Greenewald, Jr., creator of:

The Black Vault



The Black Vault is the largest online Freedom of Information Act (FOIA) document clearinghouse in the world. The research efforts here are responsible for the declassification of hundreds of thousands of pages released by the U.S. Government & Military.

Discover the Truth at: <http://www.theblackvault.com>

bygone
cool c
fine smells of
flower smells pc
insect sounds of
sighing sound
creaked pc

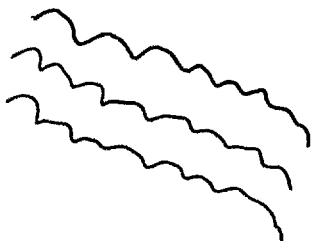
A02 Break
red/white
sandstone
formations

A02 Break
Green liam
plate on old
in

53° 50" N.
9° 36' W.



A. *suavol*
descendens
solid
B. *Argentaria*
confusion break



S-2
lumpy pc
bumpy c
nodules c
mineralized of
sparkly of
intensities? c
networks S c
crumbly by c
weathered c
abandoned c

AI break
bleak limestone
abandoned

A02 Break
dry bleak
street town

Ad Break
desert, was as
windy empty

53° 00' 50" N.
9° 36' W. _____

miss break

53° 50" N.
9° 36' W. _____

A. across
across
B. water c

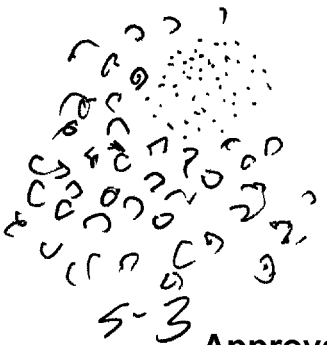
S-2

flat c
grey c
ripples c

lip
solid

light grey c
bird sounds pc
fuzzy smell cpr

grainy c
gritty c
brown grey c
extruded cpr
jumbled c
glintily cpr
smooth c
lumpy c

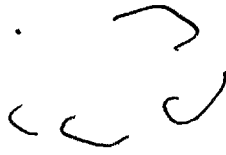


Ad Break
oyster/muscles

Ad Break
limestone cave

53° 50' N.

9° 36' W.



A. rounded
Solid

B. -

S-2

- Smelly gr
- damp pc
- Sandy pc
- diffused pc
- cold c
- hard c
- salty c
- encrusted ~~crustacean~~ c
- loose c
- slippery pc
- bird sounds
- ocean gr
- surf sounds c
- hazy c

AVL break
 bird eggs
 cannon balls

53° 00' 50" N.

9° 36' W.



A. Scalloped
Solid

B. -

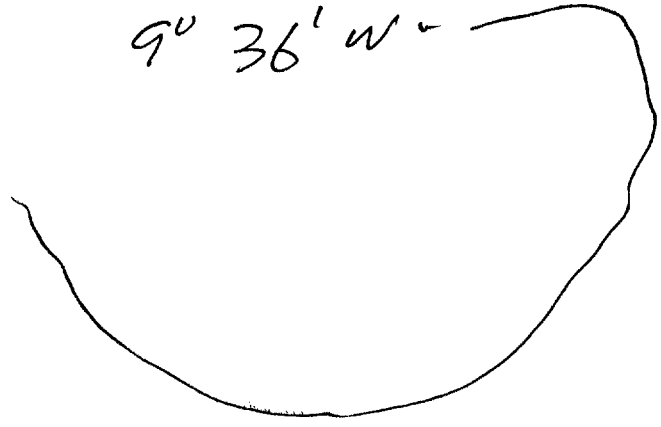


S-2
green c
blue c
red cft
dark brown c
dense pc
metallic
Stone c



53° 00' 50" N.

9° 36' W.



A. around
hard

B. -

S-2

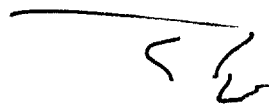
open c
broken c
piled c
fractured c
empty c
used pc
rotting pc
traces pc
crusty
metallic c

corners + edges c
tumbledown c
Fragmented c
blasted

AOL Break

ruined crusader fort
by the sea

53° 00' 50" N.
9° 36' W.



A. corners, angle
solid

B. structure c

S-2

grey

flatsurfaced c

round c

deep cfr

tall cfr

big pc

overgrown pc

'blocky c

loose pc

piled c

rounded

manmade c

solid work c

→ topped c

hollow c

from
piles c

open

AOL Break

ruined ruins
in sandstone

AOL Break

ruined lighthouse

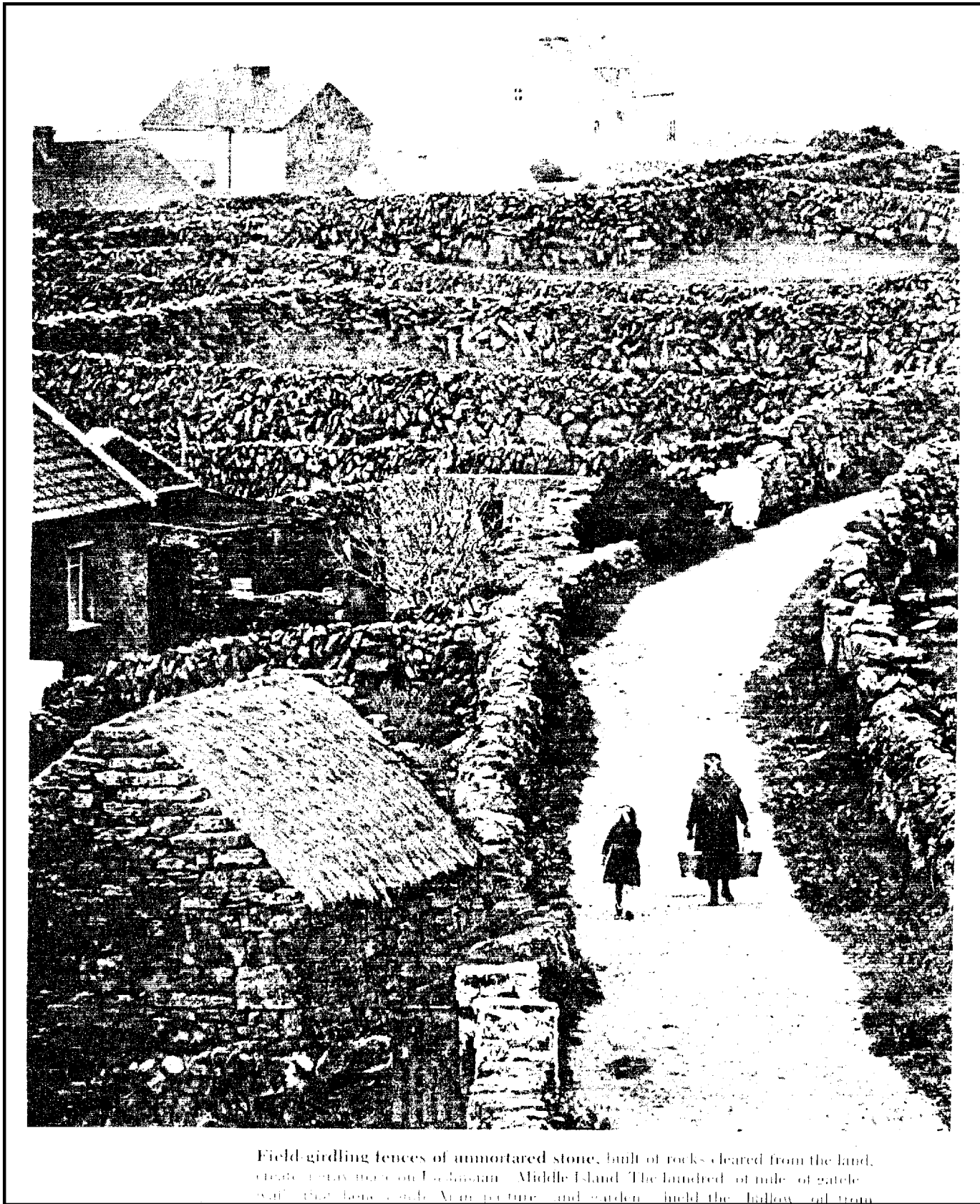


S-3 sketch

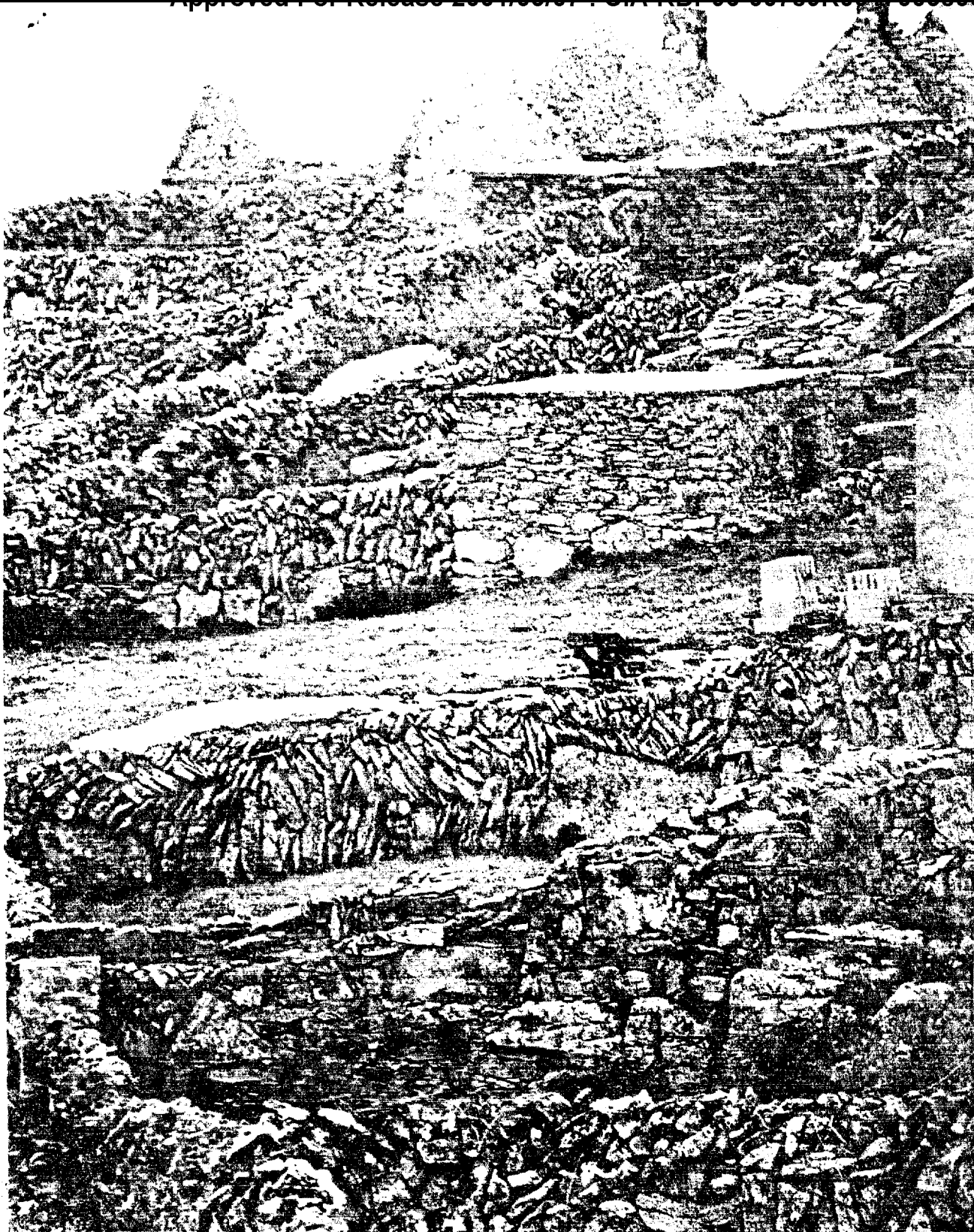
Break
Radar Jones
Neutrons

end

CPYRGHT



Field-girdling fences of un-mortared stone, built of rocks cleared from the land, create terraces on Middle Island. The hundred of miles of gateless walls that form roads, farm boundaries, and garden enclosures hold the soil from



buffeting winds. Passage to a field means climbing the fence or taking part of it down. The child and shawl-clad woman trudge toward a distant water pump — one of the daily chores on this timeless isle that even today enjoys few modern conveniences.