

SESSION INFORMATION**A. TARGET DATA:**

Task/Target No. :93-168-P
 Session No. :01

B. PERSONAL DATA:

Source No. :025
 Monitor's No. :N/A
 Beacon/Sender No. :M.S.

C. SESSION DATA:

Date Task Received :25 Feb 93
 Session Date :25 Feb 93
 Start Time :12:00
 Stop Time :1:00
 Method Used :ERV
 Aids/Distractions (PIs) :N/A
 Pre-session Hunches (AVs) :N/A
 Date Summary Returned :25 Feb 93

D. EVALUATION DATA:

Viewer's Estimate :N/A
 Evaluator's Estimate :

E. SESSION SUMMARY

The target is a large tall/high structure which is L shaped, triangular in design and all-encompassing. Black is the predominant color and sunlight reflects off of its windows. An object in the forefront acts like a rotisserie with two smaller circular round portions moving in motion. This structure appears to be modern, man-made, with some commercial interests. It is a working environment with people present and its purpose is to measure something. This structure has directional foresight. Engines can be found in the area.

The second area pictured is a natural, deep creviced site, structurally shown in the ground as narrowed with high side walls. Water may shower down into this rocky area. Low to high areas are emphasized at this ravine, which is beautiful and sun light reflects off of its darkened surface.

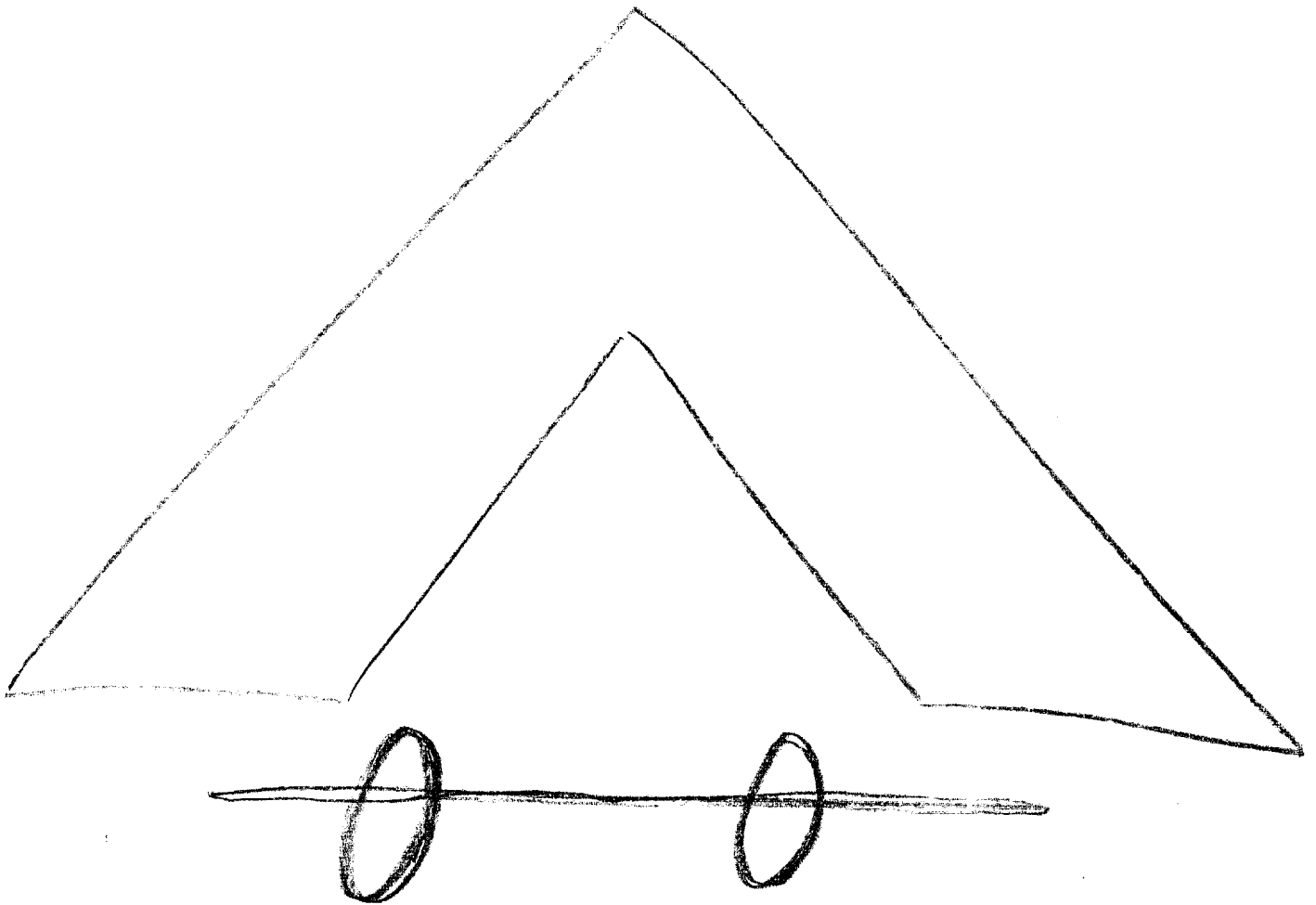
This document is made available through the declassification efforts
and research of John Greenewald, Jr., creator of:

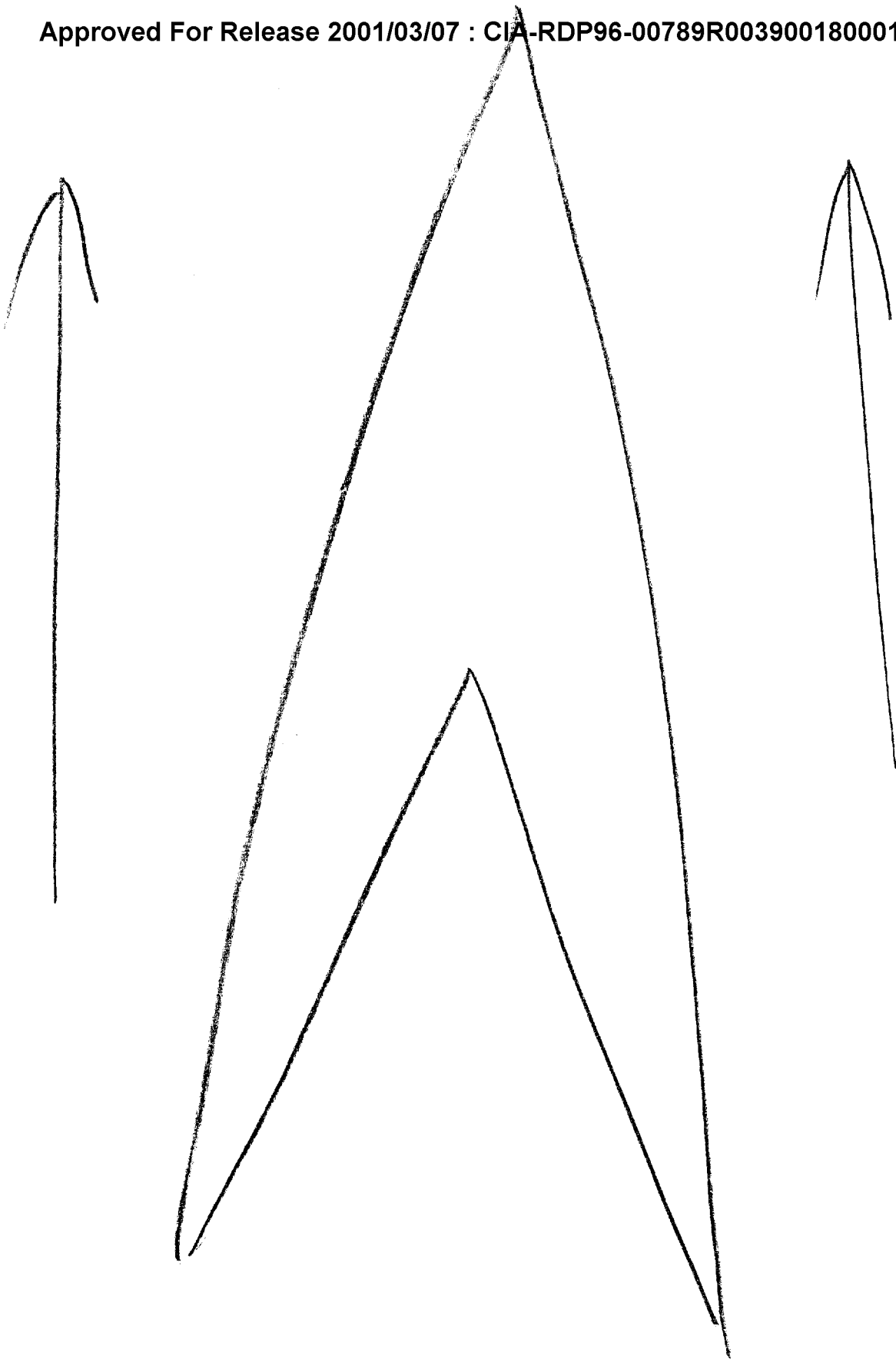
The Black Vault

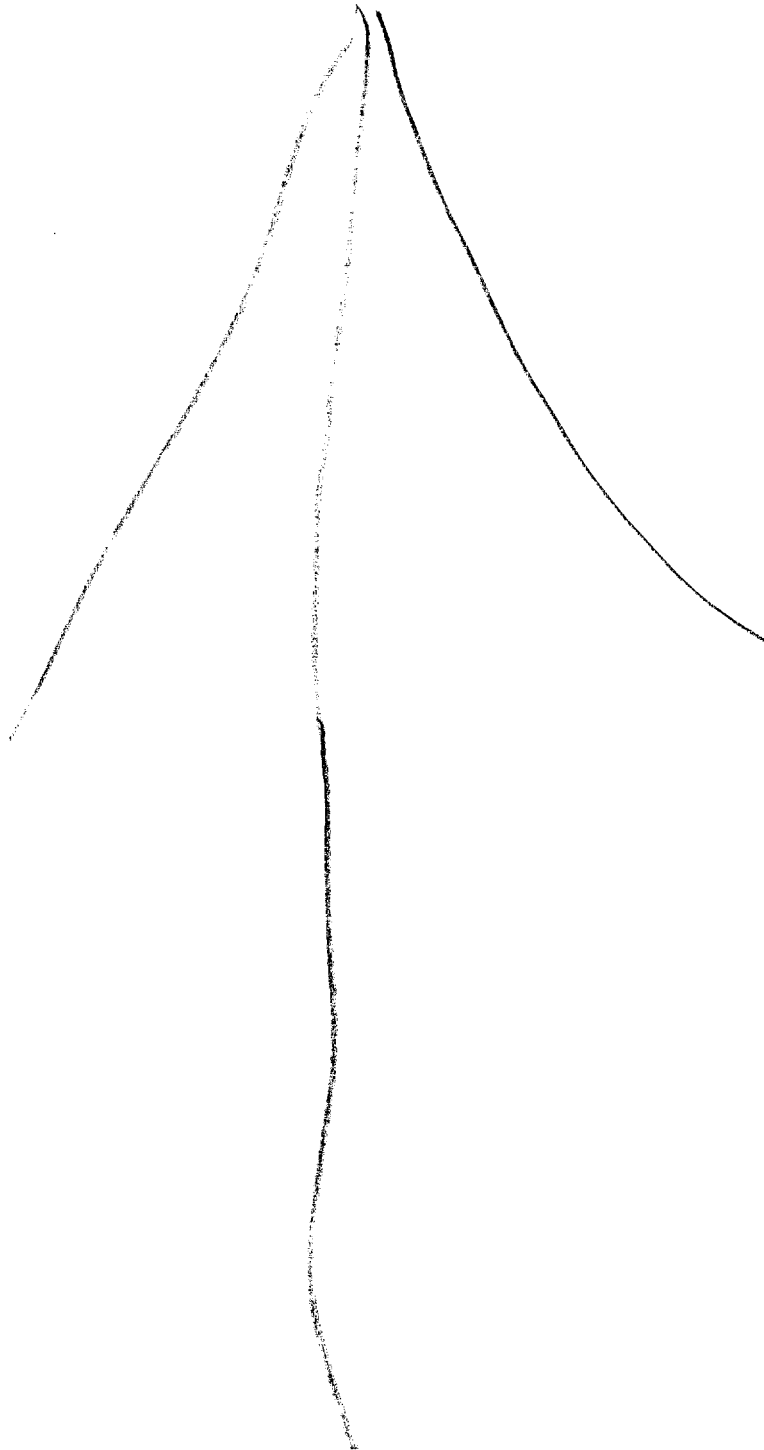


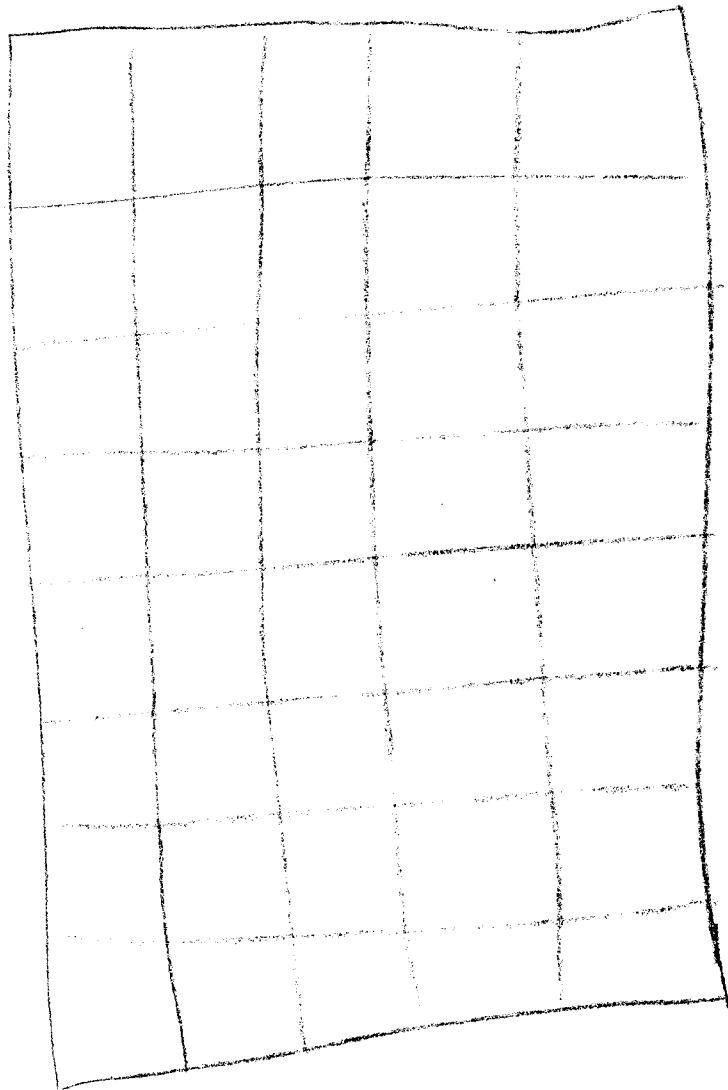
The Black Vault is the largest online Freedom of Information Act (FOIA) document clearinghouse in the world. The research efforts here are responsible for the declassification of hundreds of thousands of pages released by the U.S. Government & Military.

Discover the Truth at: <http://www.theblackvault.com>

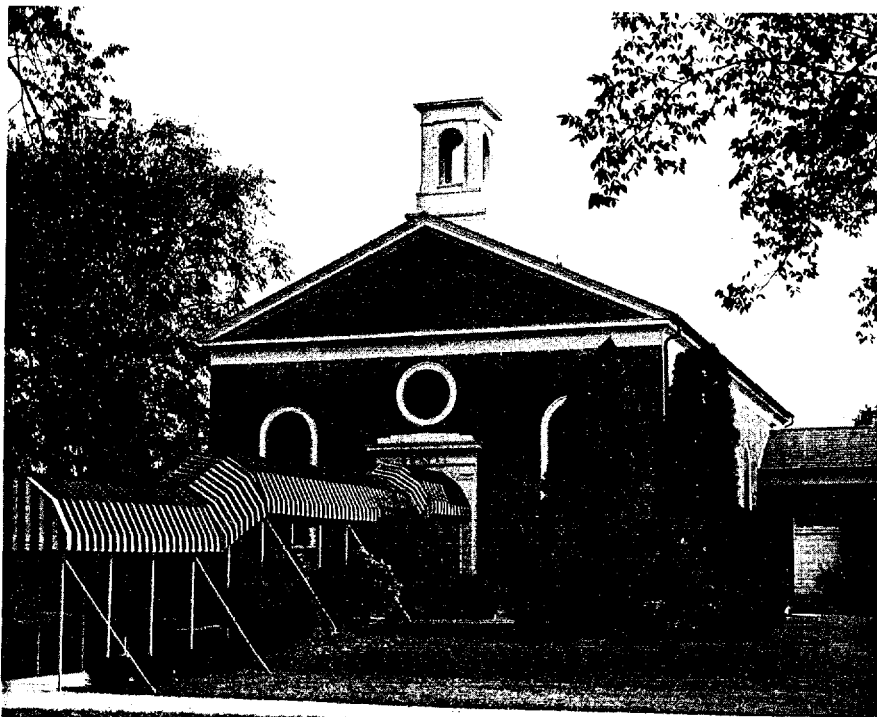








CPYRGHT



Chapel services are regularly held for the major faith groups – Protestant, Catholic and Jewish.

93-168-10

1. Conceptual Elements
 - a. Red / White
 - b. worship / Religion
 - c. Trust
 - d. Surrounded by Street / Greenery

2. Analytic / Specifics
 - a. Chapel
 - b. White Space
 - c. Corridor
 - d. L-shaped
 - e. Brick Building
 - f. 1 Story

TASKING SHEET

SOURCE NO: 025
DATE: 24 Feb 93
SUSPENSE: 25 Feb 93
1200 hrs.

1. PROJECT NUMBER: 93-168-P
2. METHOD/TECHNIQUE: Method of choice.

3. BACKGROUND: This project is a continuation of a proficiency series targeting "structures/configurations,"

----These configurations can be anything. However, buildings/structures will be dominant.

----Targets will emphasize key elements that are unique or distinct. They will be composed of specific shapes, contours, and configurations. Some targets may have multiple similar shapes/features

----Targets may be of a commercial, governmental, or military. They may be either historic or contemporary.

4. ESSENTIAL ELEMENTS OF INFORMATION:

----Describe/sketch the key features/shapes/contours of the target.

----Describe/sketch the spatial relationships or relative sizes of the target features.

----Determine other features such as colors and predominant backgrounds.

----Determine the purpose of the target structures.

COMMENTS:

---This target has does not have a beacon person. Beacon person is MS.

----Optional Coordinates: 914203/341792.